

## Unit 2A - Villa Palms

2A - 4216 Leo Ln, Riviera Beach, FL, Palm Beach 33410

### Unit Information

MLS Number:	RX-11118912
Status:	Active
Size:	1,554 Sq ft.
Bedrooms:	3
Full Bathrooms:	2
Half Bathrooms:	0
Parking Spaces:	
View:	
List Price:	\$295,000
List PPSF:	\$190
Valuated Price:	\$280,000
Valuated PPSF:	\$180

*The above valuated price is a baseline figure that does not take into account any specific renovation, upgrade, split, merge, or deterioration of the unit.*

### Building Information

Number of units:	30
Number of active listings for rent:	0
Number of active listings for sale:	1
Building inventory for sale:	3%
Number of sales over the last 12 months:	1
Number of sales over the last 6 months:	0
Number of sales over the last 3 months:	0

### Building Association Information

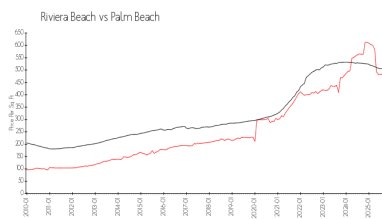
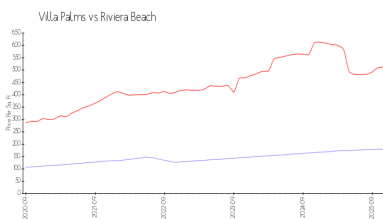
Villa Palms  
c/o GRS Community Management  
3900 Woodlake Blvd. Suite 309  
Lake Worth, FL 33463  
TEL: 561-641-8554  
FAX: 561-641-9448

<https://www.grsmgt.com/association/villa-palms/>

### Recent Sales

Unit #	Size	Closing Date	Sale Price	PPSF
4e	2,116 sq ft	Apr 2025	\$369,000	\$174

### Market Information



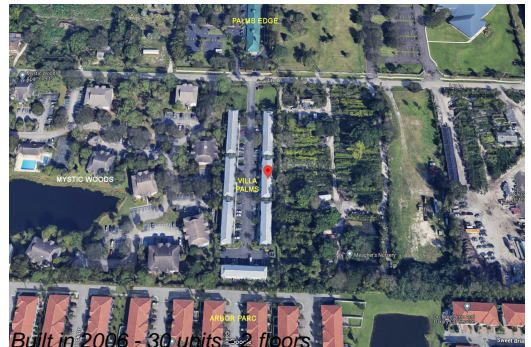
Villa Palms:	\$180/sq. ft.	Riviera Beach:	\$512/sq. ft.
Riviera Beach:	\$512/sq. ft.	Palm Beach:	\$452/sq. ft.

### Inventory for Sale

Villa Palms	3%
Riviera Beach	4%
Palm Beach	3%

### Avg. Time to Close Over Last 12 Months

Villa Palms	59 days
-------------	---------



Riviera Beach  
Palm Beach

104 days  
77 days