

Unit 1217 S DRIVE WAY #A - High Point 5

1217 S DRIVE WAY #A - 1072 North Dr, Delray Beach, FL, Palm Beach 33445

Unit Information

MLS Number:	RX-11119269
Status:	Active
Size:	1,080 Sq ft.
Bedrooms:	2
Full Bathrooms:	2
Half Bathrooms:	0
Parking Spaces:	
View:	
List Price:	\$191,000
List PPSF:	\$177
Valuated Price:	\$162,000
Valuated PPSF:	\$142

The above valuated price is a baseline figure that does not take into account any specific renovation, upgrade, split, merge, or deterioration of the unit.

Building Information

Number of units:	268
Number of active listings for rent:	0
Number of active listings for sale:	28
Building inventory for sale:	10%
Number of sales over the last 12 months:	44
Number of sales over the last 6 months:	20
Number of sales over the last 3 months:	8

Building Association Information

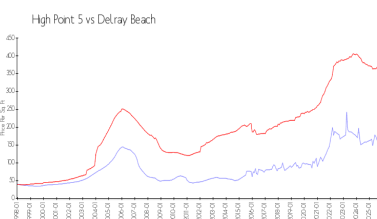
High Point of Delray Section 5 Condo
Assoc Inc
1103 Club Dr W
Delray Beach, FL 33445
(561) 495-7866

<https://www.highpointfive.com/>

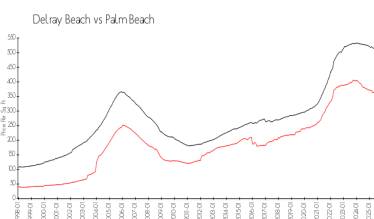
Recent Sales

Unit #	Size	Closing Date	Sale Price	PPSF
B	1,080 sq ft	Nov 2025	\$200,000	\$185
B	1,200 sq ft	Oct 2025	\$237,500	\$198
D	1,200 sq ft	Sep 2025	\$279,000	\$233
C	1,040 sq ft	Aug 2025	\$125,000	\$120
B	1,080 sq ft	Aug 2025	\$162,000	\$150
C	1,200 sq ft	Aug 2025	\$225,000	\$188

Market Information



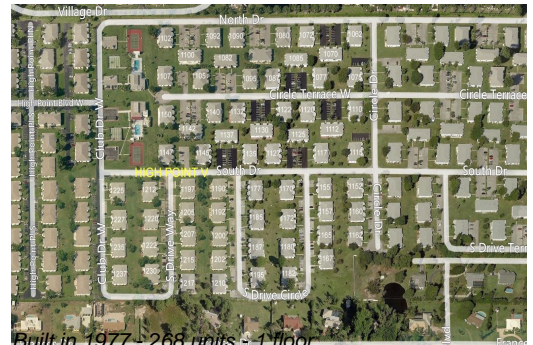
High Point 5: \$142/sq. ft.
Delray Beach: \$346/sq. ft.



Delray Beach: \$346/sq. ft.
Palm Beach: \$453/sq. ft.

Inventory for Sale

High Point 5	10%
Delray Beach	2%
Palm Beach	2%



Built in 1977 - 268 units - 1 floor

Avg. Time to Close Over Last 12 Months

High Point 5	76 days
Delray Beach	76 days
Palm Beach	77 days