

Unit 406 Mainsail Cir - Sea Colony

406 Mainsail Cir - 101-1909 Mainsail Cir, Jupiter, FL, Palm Beach 33477

Unit Information

MLS Number:	RX-11123744
Status:	Active
Size:	1,624 Sq ft.
Bedrooms:	2
Full Bathrooms:	2
Half Bathrooms:	0
Parking Spaces:	Driveway,Garage - Attached
View:	Garden,Ocean
Rental Price:	\$8,000
List PPSF:	\$5
Valuated Price:	\$1,069,000
Valuated PPSF:	\$658

The above valuated price is a baseline figure that does not take into account any specific renovation, upgrade, split, merge, or deterioration of the unit.

Building Information

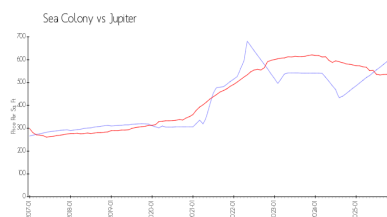
Number of units:	171
Number of active listings for rent:	0
Number of active listings for sale:	5
Building inventory for sale:	2%
Number of sales over the last 12 months:	6
Number of sales over the last 6 months:	2
Number of sales over the last 3 months:	1

Building Association Information

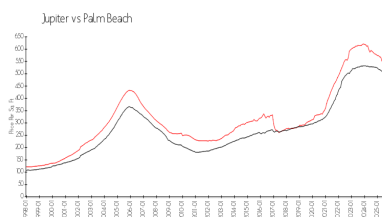
Sea Colony Community Association
Address: 1910 Mainsail Cir,
Jupiter, FL 33477
Phone: +1 561-743-5411

<https://>

Market Information



Sea Colony: \$602/sq. ft.
Jupiter: \$532/sq. ft.



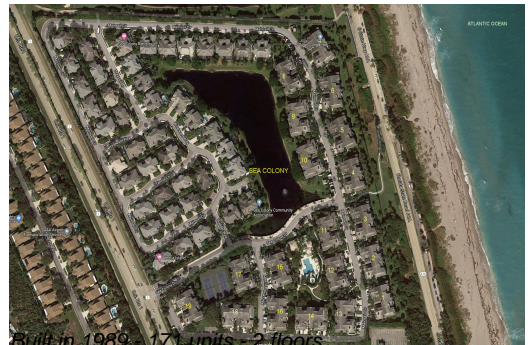
Jupiter: \$532/sq. ft.
Palm Beach: \$452/sq. ft.

Inventory for Sale

Sea Colony	3%
Jupiter	3%
Palm Beach	3%

Avg. Time to Close Over Last 12 Months

Sea Colony	93 days
Jupiter	86 days
Palm Beach	77 days



Built in 1989 - 171 units - 2 floors