

Unit 705 Mainsail Cir - Sea Colony

705 Mainsail Cir - 101-1909 Mainsail Cir, Jupiter, FL, Palm Beach 33477

Unit Information

MLS Number:	RX-11126466
Status:	Active
Size:	1,624 Sq ft.
Bedrooms:	2
Full Bathrooms:	2
Half Bathrooms:	0
Parking Spaces:	Garage - Attached
View:	
List Price:	\$915,000
List PPSF:	\$563
Valuated Price:	\$1,069,000
Valuated PPSF:	\$658

The above valuated price is a baseline figure that does not take into account any specific renovation, upgrade, split, merge, or deterioration of the unit.

Building Information

Number of units:	171
Number of active listings for rent:	0
Number of active listings for sale:	5
Building inventory for sale:	2%
Number of sales over the last 12 months:	6
Number of sales over the last 6 months:	2
Number of sales over the last 3 months:	1

Building Association Information

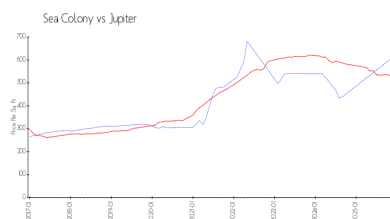
Sea Colony Community Association
Address: 1910 Mainsail Cir,
Jupiter, FL 33477
Phone: +1 561-743-5411

<https://>

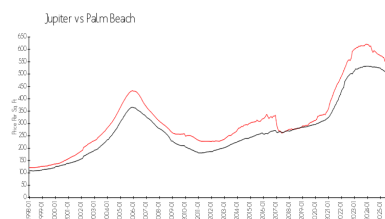
Recent Sales

Unit #	Size	Closing Date	Sale Price	PPSF
1706	1,624 sq ft	Nov 2025	\$930,000	\$573
	1,263 sq ft	Jul 2025	\$682,500	\$540
703	1,897 sq ft	May 2025	\$910,000	\$480
	1,620 sq ft	Apr 2025	\$1,200,000	\$741
	1,624 sq ft	Mar 2025	\$850,000	\$523
	1,624 sq ft	Mar 2025	\$771,000	\$475

Market Information



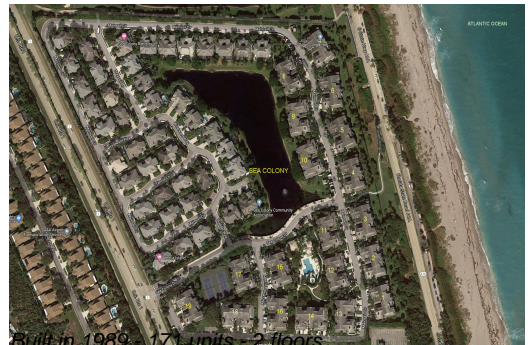
Sea Colony: \$602/sq. ft.
Jupiter: \$532/sq. ft.



Jupiter: \$532/sq. ft.
Palm Beach: \$452/sq. ft.

Inventory for Sale

Sea Colony	3%
Jupiter	3%
Palm Beach	3%



Avg. Time to Close Over Last 12 Months

Sea Colony	93 days
Jupiter	85 days
Palm Beach	77 days