

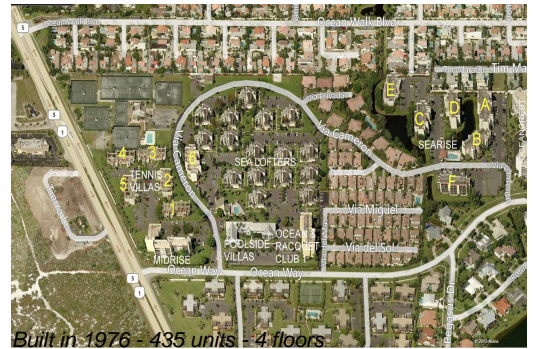
Unit Sea Lofters E-8 - Jupiter Ocean & Racquet Club

Sea Lofters E-8 - 1605 S US Hwy 1, Jupiter, FL, Palm Beach 33477

Unit Information

MLS Number:	RX-11127894
Status:	Active
Size:	1,160 Sq ft.
Bedrooms:	2
Full Bathrooms:	2
Half Bathrooms:	0
Parking Spaces:	Assigned,Guest
View:	Garden
List Price:	\$499,999
List PPSF:	\$431
Valuated Price:	\$408,000
Valuated PPSF:	\$352

The above valuated price is a baseline figure that does not take into account any specific renovation, upgrade, split, merge, or deterioration of the unit.



Building Information

Number of units:	435
Number of active listings for rent:	0
Number of active listings for sale:	17
Building inventory for sale:	3%
Number of sales over the last 12 months:	23
Number of sales over the last 6 months:	14
Number of sales over the last 3 months:	7

Building Association Information

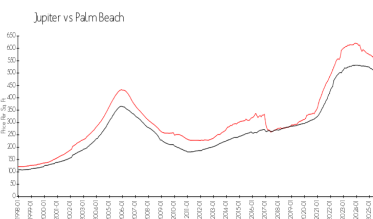
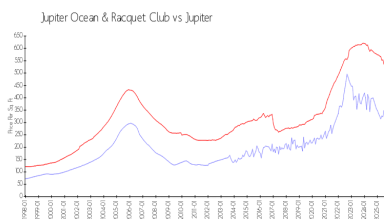
Jupiter Ocean & Racquet Club AssociationAddress: 1605 U.S. 1,
Jupiter, FL 33477
Phone:(561) 747-5331

<https://jorcinc.net/site/>

Recent Sales

Unit #	Size	Closing Date	Sale Price	PPSF
C-206	1,183 sq ft	Dec 2025	\$350,000	\$296
V2-204	935 sq ft	Dec 2025	\$288,000	\$308
SI15d	740 sq ft	Nov 2025	\$259,500	\$351
SI15d	740 sq ft	Nov 2025	\$259,500	\$351
2c	740 sq ft	Oct 2025	\$310,000	\$419
D206	1,183 sq ft	Oct 2025	\$387,000	\$327

Market Information



Jupiter Ocean & Racquet Club:	\$315/sq. ft.	Jupiter:	\$532/sq. ft.
Jupiter:	\$532/sq. ft.	Palm Beach:	\$452/sq. ft.

Inventory for Sale

Jupiter Ocean & Racquet Club	4%
Jupiter	3%

Palm Beach	3%
------------	----

Avg. Time to Close Over Last 12 Months

Jupiter Ocean & Racquet Club	96 days
Jupiter	85 days
Palm Beach	77 days