

# Unit 2000 N Congress Ave # 206 - Presidential Golfview

2000 N Congress Ave # 206 - 1700 N Congress Ave, West Palm Beach, FL, Palm Beach 33401

## Unit Information

MLS Number: RX-11130746  
Status: Active  
Size: 720 Sq ft.  
Bedrooms: 1  
Full Bathrooms: 1  
Half Bathrooms: 1  
Parking Spaces:  
View: Garden,Pond  
List Price: \$140,000  
List PPSF: \$194  
Valuated Price: \$117,000  
Valuated PPSF: \$163

*The above valuated price is a baseline figure that does not take into account any specific renovation, upgrade, split, merge, or deterioration of the unit.*

## Building Information

Number of units: 436  
Number of active listings for rent: 0  
Number of active listings for sale: 19  
Building inventory for sale: 4%  
Number of sales over the last 12 months: 6  
Number of sales over the last 6 months: 4  
Number of sales over the last 3 months: 3

## Building Association Information

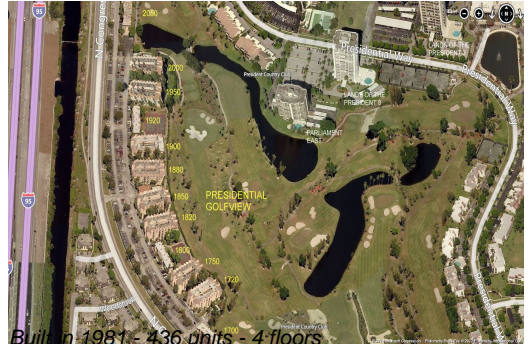
Presidential Golfview Condo  
West Palm Beach, FL 33401  
1700 N Congress Ave Apt A,  
(561) 684-7725  
1720 N Congress Ave Apt A,  
(561) 471-0981  
1750 N Congress Ave,  
(561) 688-0892  
1820 N Congress Ave Apt A,  
(561) 686-6342  
1850 N Congress Ave,  
(561) 686-1077  
1860 N Congress Ave  
(561) 686-4948  
1900 S Congress Ave Ste A,  
(561) 683-7512  
2000 N Congress Ave # A,  
(561) 684-1531

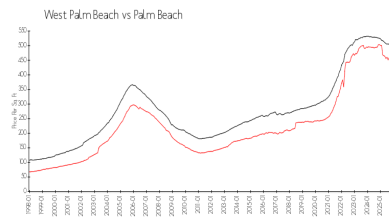
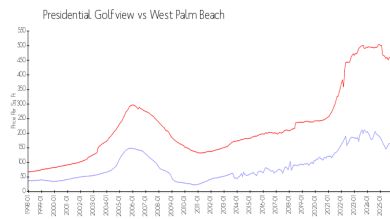
<https://>

## Recent Sales

Unit #	Size	Closing Date	Sale Price	PPSF
306	720 sq ft	Dec 2025	\$120,000	\$167
302	775 sq ft	Nov 2025	\$122,000	\$157
403	775 sq ft	Oct 2025	\$130,000	\$168
409	775 sq ft	Jun 2025	\$110,000	\$142
404	775 sq ft	Jun 2025	\$120,000	\$155

## Market Information





Presidential	\$164/sq. ft.	West Palm Beach:	\$459/sq. ft.
Golfview:		Palm Beach:	\$452/sq. ft.
West Palm Beach:	\$459/sq. ft.		

## Inventory for Sale

Presidential Golfview	4%
West Palm Beach	3%
Palm Beach	3%

## Avg. Time to Close Over Last 12 Months

Presidential Golfview	45 days
West Palm Beach	70 days
Palm Beach	77 days