

# Unit 1700 Dover Rd # 215-A - Lakeview Greens A B C & D

1700 Dover Rd # 215-A - 3001 Linton Blvd, Delray Beach, FL, Palm Beach 33483

## Unit Information

MLS Number:	RX-11131210
Status:	Active
Size:	1,080 Sq ft.
Bedrooms:	2
Full Bathrooms:	2
Half Bathrooms:	0
Parking Spaces:	Assigned, Guest
View:	Garden
List Price:	\$199,900
List PPSF:	\$185
Valuated Price:	\$180,000
Valuated PPSF:	\$162

*The above valuated price is a baseline figure that does not take into account any specific renovation, upgrade, split, merge, or deterioration of the unit.*

## Building Information

Number of units:	128
Number of active listings for rent:	0
Number of active listings for sale:	7
Building inventory for sale:	5%
Number of sales over the last 12 months:	4
Number of sales over the last 6 months:	2
Number of sales over the last 3 months:	1

## Building Association Information

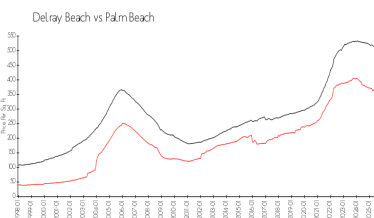
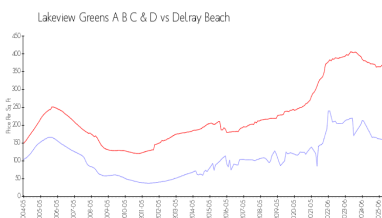
Lakeview Green Condo Assoc Inc  
3011 Linton Boulevard Office  
Delray Beach, FL 33445  
Phone: (561) 498-3313

<https://>

## Recent Sales

Unit #	Size	Closing Date	Sale Price	PPSF
203d	1,080 sq ft	Oct 2025	\$175,000	\$162
203b	1,108 sq ft	Jul 2025	\$220,000	\$199
210-B	1,108 sq ft	May 2025	\$204,000	\$184
206d	1,080 sq ft	Jan 2025	\$185,000	\$171

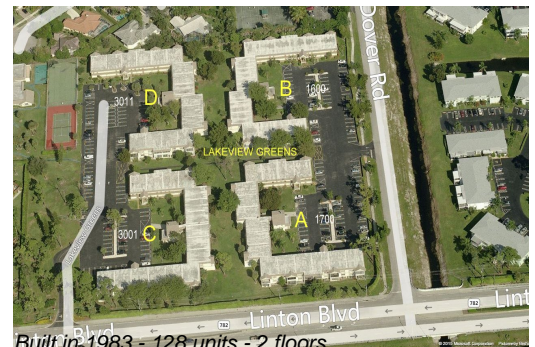
## Market Information



Lakeview Greens A	\$161/sq. ft.	Delray Beach:	\$346/sq. ft.
B C & D:			
Delray Beach:	\$346/sq. ft.	Palm Beach:	\$453/sq. ft.

## Inventory for Sale

Lakeview Greens A B C & D	5%
Delray Beach	2%
Palm Beach	2%



### **Avg. Time to Close Over Last 12 Months**

Lakeview Greens A B C & D	162 days
Delray Beach	76 days
Palm Beach	77 days