

# Unit 7-F - Sabal Ridge

7-F - 101 Sabal Ridge Ct, Palm Beach Gardens, FL, Palm Beach 33418

## Unit Information

MLS Number:	RX-11131502
Status:	Pending
Size:	1,200 Sq ft.
Bedrooms:	2
Full Bathrooms:	2
Half Bathrooms:	0
Parking Spaces:	
View:	Lake
List Price:	\$310,000
List PPSF:	\$258
Valuated Price:	\$256,000
Valuated PPSF:	\$213

*The above valuated price is a baseline figure that does not take into account any specific renovation, upgrade, split, merge, or deterioration of the unit.*

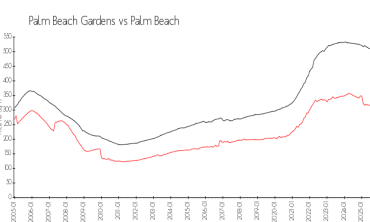
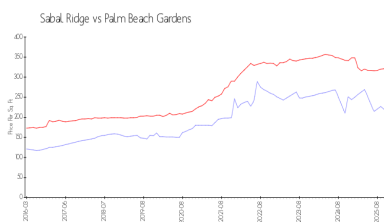
## Building Information

Number of units:	184
Number of active listings for rent:	0
Number of active listings for sale:	1
Building inventory for sale:	0%
Number of sales over the last 12 months:	9
Number of sales over the last 6 months:	6
Number of sales over the last 3 months:	4

## Recent Sales

Unit #	Size	Closing Date	Sale Price	PPSF
E	1,400 sq ft	Nov 2025	\$299,000	\$214
F	1,200 sq ft	Sep 2025	\$318,000	\$265
C	1,200 sq ft	Sep 2025	\$250,000	\$208
A	1,400 sq ft	Sep 2025	\$290,000	\$207
A	1,410 sq ft	Jul 2025	\$300,000	\$213

## Market Information



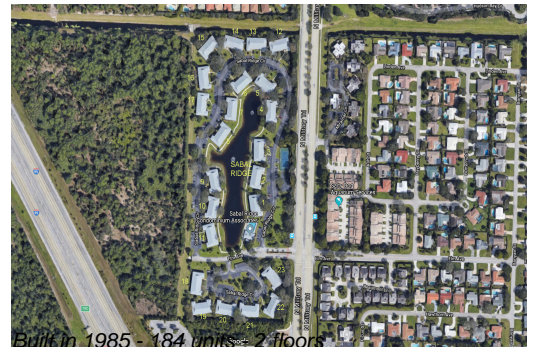
Sabal Ridge:	\$213/sq. ft.	Palm Beach	\$312/sq. ft.
Palm Beach	\$312/sq. ft.	Gardens:	
Gardens:		Palm Beach:	\$453/sq. ft.

## Inventory for Sale

Sabal Ridge	1%
Palm Beach Gardens	2%
Palm Beach	2%

## Avg. Time to Close Over Last 12 Months

Sabal Ridge	86 days
Palm Beach Gardens	66 days
Palm Beach	77 days



Built in 1985 - 184 units - 2 floors