

# Unit 16050 W Bay Dr # 155 - West Bay at Jonathan's Landing

16050 W Bay Dr # 155 - 3911-3971 Schooner Pointe Dr, Jupiter, FL, Palm Beach 33477

## Unit Information

MLS Number:	RX-11138578
Status:	Active
Size:	1,834 Sq ft.
Bedrooms:	2
Full Bathrooms:	2
Half Bathrooms:	0
Parking Spaces:	Driveway,Garage - Attached,Golf Cart
View:	Lake
List Price:	\$865,000
List PPSF:	\$472
Valuated Price:	\$522,000
Valuated PPSF:	\$316

*The above valuated price is a baseline figure that does not take into account any specific renovation, upgrade, split, merge, or deterioration of the unit.*

## Building Information

Number of units:	130
Number of active listings for rent:	0
Number of active listings for sale:	3
Building inventory for sale:	2%
Number of sales over the last 12 months:	8
Number of sales over the last 6 months:	3
Number of sales over the last 3 months:	1

## Building Association Information

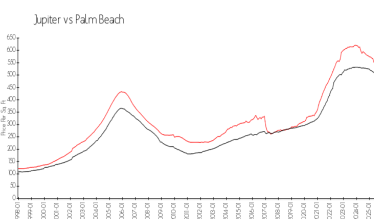
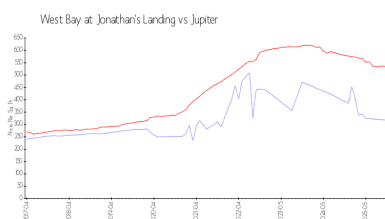
Jonathan's Landing POA  
3755 Barrow Island Road  
Jupiter, FL 33477  
Office Phone: 561-743-2032  
Fax: 561-743-2062  
Email: admin@jlpoa.com

<https://jonathanslandingpoa.com/the-villages/west-bay>

## Recent Sales

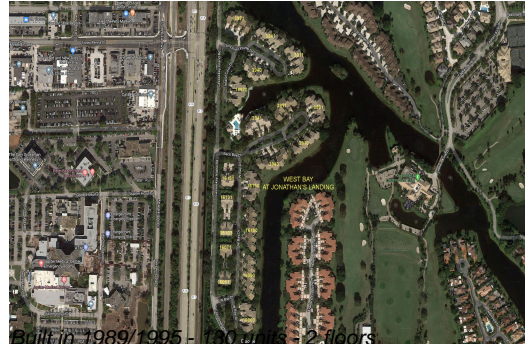
Unit #	Size	Closing Date	Sale Price	PPSF
230	1,839 sq ft	Dec 2025	\$605,000	\$329
247	1,839 sq ft	Jul 2025	\$745,000	\$405
120	1,724 sq ft	Jun 2025	\$815,000	\$473
224	1,839 sq ft	Jun 2025	\$630,000	\$343
250	1,839 sq ft	May 2025	\$600,000	\$326

## Market Information



West Bay at Jonathan's Landing:	\$317/sq. ft.	Jupiter:	\$532/sq. ft.
Jupiter:	\$532/sq. ft.	Palm Beach:	\$452/sq. ft.

## Inventory for Sale



West Bay at Jonathan's Landing	2%
Jupiter	3%
Palm Beach	3%

### **Avg. Time to Close Over Last 12 Months**

West Bay at Jonathan's Landing	89 days
Jupiter	85 days
Palm Beach	77 days