

# Unit 211 - City Walk Pineapple Grove

211 - 200 NE 2 Av, Delray Beach, FL, Palm Beach 33444

## Unit Information

MLS Number:	RX-11143890
Status:	Active
Size:	2,038 Sq ft.
Bedrooms:	3
Full Bathrooms:	2
Half Bathrooms:	1
Parking Spaces:	Covered
View:	City
List Price:	\$1,295,000
List PPSF:	\$635
Valuated Price:	\$1,049,000
Valuated PPSF:	\$559

*The above valuated price is a baseline figure that does not take into account any specific renovation, upgrade, split, merge, or deterioration of the unit.*

## Building Information

Number of units:	40
Number of active listings for rent:	3
Number of active listings for sale:	4
Building inventory for sale:	10%
Number of sales over the last 12 months:	4
Number of sales over the last 6 months:	2
Number of sales over the last 3 months:	1

## Building Association Information

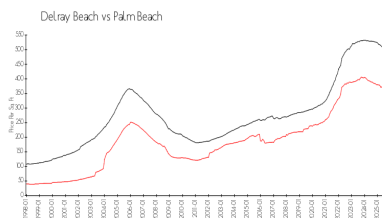
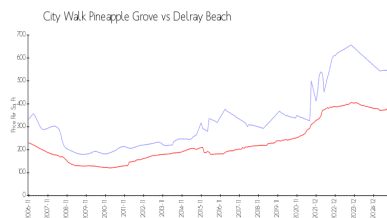
City Walk At Pineapple Grove  
200 NE 2nd Ave, Delray Beach, FL 33444  
(561) 266-5970

<https://>

## Recent Sales

Unit #	Size	Closing Date	Sale Price	PPSF
315	2,122 sq ft	Dec 2025	\$1,400,000	\$660
403	1,146 sq ft	Apr 2025	\$540,000	\$471
410	1,531 sq ft	Apr 2025	\$915,000	\$598

## Market Information



City Walk Pineapple Grove: \$549/sq. ft.  
Delray Beach: \$353/sq. ft.

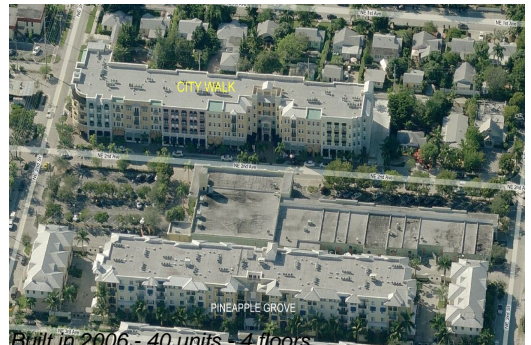
Delray Beach: \$353/sq. ft.  
Palm Beach: \$452/sq. ft.

## Inventory for Sale

City Walk Pineapple Grove	10%
Delray Beach	2%
Palm Beach	3%

## Avg. Time to Close Over Last 12 Months

City Walk Pineapple Grove	87 days
---------------------------	---------



Built in 2006 - 40 units - 4 floors

Delray Beach  
Palm Beach

76 days  
77 days