

Unit 414 - City Walk Pineapple Grove

414 - 200 NE 2 Av, Delray Beach, FL, Palm Beach 33444

Unit Information

MLS Number:	RX-11143980
Status:	Active
Size:	1,262 Sq ft.
Bedrooms:	2
Full Bathrooms:	2
Half Bathrooms:	0
Parking Spaces:	Assigned, Under Building
View:	City
List Price:	\$915,000
List PPSF:	\$725
Valuated Price:	\$655,000
Valuated PPSF:	\$519

The above valuated price is a baseline figure that does not take into account any specific renovation, upgrade, split, merge, or deterioration of the unit.

Building Information

Number of units:	40
Number of active listings for rent:	3
Number of active listings for sale:	4
Building inventory for sale:	10%
Number of sales over the last 12 months:	4
Number of sales over the last 6 months:	2
Number of sales over the last 3 months:	1

Building Association Information

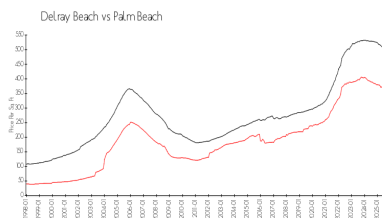
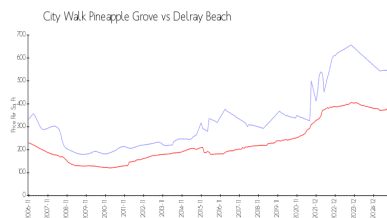
City Walk At Pineapple Grove
200 NE 2nd Ave, Delray Beach, FL 33444
(561) 266-5970

<https://>

Recent Sales

Unit #	Size	Closing Date	Sale Price	PPSF
315	2,122 sq ft	Dec 2025	\$1,400,000	\$660
403	1,146 sq ft	Apr 2025	\$540,000	\$471
410	1,531 sq ft	Apr 2025	\$915,000	\$598

Market Information



City Walk Pineapple Grove: \$549/sq. ft.
Delray Beach: \$353/sq. ft.

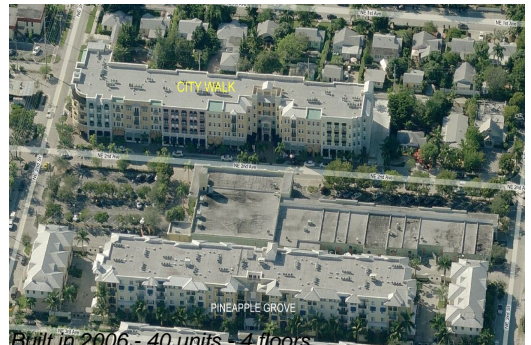
Delray Beach: \$353/sq. ft.
Palm Beach: \$452/sq. ft.

Inventory for Sale

City Walk Pineapple Grove	10%
Delray Beach	3%
Palm Beach	3%

Avg. Time to Close Over Last 12 Months

City Walk Pineapple Grove	87 days
---------------------------	---------



Built in 2006 - 40 units - 4 floors

Delray Beach
Palm Beach

76 days
77 days