

Unit 125 Galicia Way # 15-102 - Somerset at Abacoa

125 Galicia Way # 15-102 - 224-276 Murcia Dr, Jupiter, FL, Palm Beach 33458

Unit Information

MLS Number: RX-11144267
 Status: Active
 Size: 1,194 Sq ft.
 Bedrooms: 2
 Full Bathrooms: 2
 Half Bathrooms: 0
 Parking Spaces: Garage - Attached, Street
 View: Garden
 List Price: \$395,000
 List PPSF: \$331
 Valuated Price: \$334,000
 Valuated PPSF: \$280

The above valuated price is a baseline figure that does not take into account any specific renovation, upgrade, split, merge, or deterioration of the unit.

Building Information

Number of units: 265
 Number of active listings for rent: 0
 Number of active listings for sale: 7
 Building inventory for sale: 2%
 Number of sales over the last 12 months: 16
 Number of sales over the last 6 months: 8
 Number of sales over the last 3 months: 5

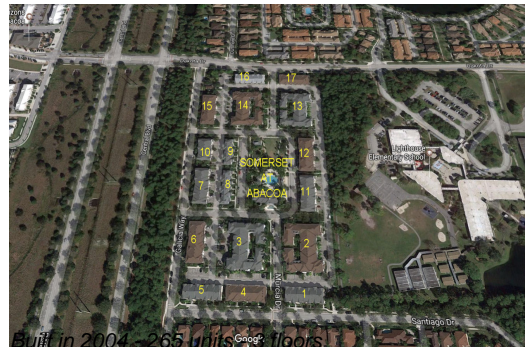
Building Association Information

Somerset Property Management:
 GRS Management Associates, Inc
 Phone: (561) 641-8554

Property Manager: Leslie Susich

Onsite: (561) 625-1609

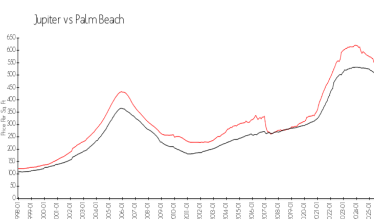
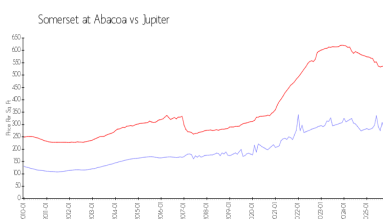
<https://www.grsmgt.com>



Recent Sales

| Unit # | Size | Closing Date | Sale Price | PPSF |
|--------|-------------|--------------|------------|-------|
| 201 | 1,211 sq ft | Dec 2025 | \$365,000 | \$301 |
| 210 | 849 sq ft | Nov 2025 | \$305,000 | \$359 |
| 202 | 1,457 sq ft | Oct 2025 | \$438,000 | \$301 |
| 201 | 1,457 sq ft | Oct 2025 | \$400,000 | \$275 |
| 102 | 1,384 sq ft | Sep 2025 | \$422,500 | \$305 |

Market Information



Somerset at Abacoa: \$282/sq. ft.
 Jupiter: \$532/sq. ft.

Jupiter: \$532/sq. ft.
 Palm Beach: \$452/sq. ft.

Inventory for Sale

| | |
|--------------------|----|
| Somerset at Abacoa | 3% |
| Jupiter | 3% |
| Palm Beach | 3% |

Avg. Time to Close Over Last 12 Months

| | |
|--------------------|---------|
| Somerset at Abacoa | 72 days |
| Jupiter | 85 days |
| Palm Beach | 77 days |