

# Unit 401 - City Walk Pineapple Grove

401 - 200 NE 2 Av, Delray Beach, FL, Palm Beach 33444

## Unit Information

MLS Number: RX-11145448  
 Status: Active  
 Size: 1,004 Sq ft.  
 Bedrooms: 1  
 Full Bathrooms: 1  
 Half Bathrooms: 0  
 Parking Spaces: Assigned, Deeded, Guest, Street, Under Building  
 View: City  
 Rental Price: \$3,450  
 List PPSF: \$3  
 Valuated Price: \$573,000  
 Valuated PPSF: \$571

*The above valuated price is a baseline figure that does not take into account any specific renovation, upgrade, split, merge, or deterioration of the unit.*

## Building Information

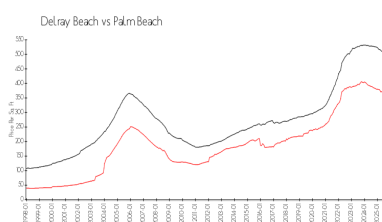
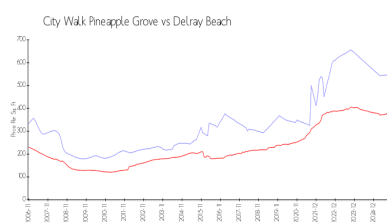
Number of units: 40  
 Number of active listings for rent: 3  
 Number of active listings for sale: 2  
 Building inventory for sale: 5%  
 Number of sales over the last 12 months: 4  
 Number of sales over the last 6 months: 2  
 Number of sales over the last 3 months: 1

## Building Association Information

City Walk At Pineapple Grove  
 200 NE 2nd Ave, Delray Beach, FL 33444  
 (561) 266-5970

<https://>

## Market Information



City Walk Pineapple Grove: \$549/sq. ft.  
 Delray Beach: \$353/sq. ft.

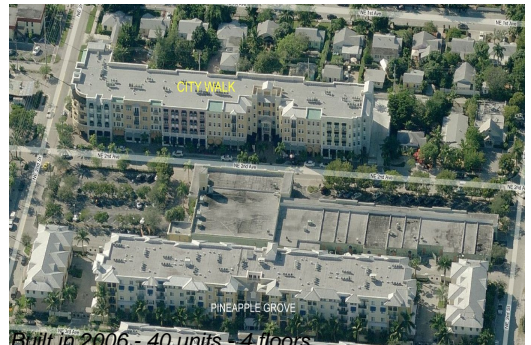
Delray Beach: \$353/sq. ft.  
 Palm Beach: \$452/sq. ft.

## Inventory for Sale

City Walk Pineapple Grove: 5%  
 Delray Beach: 2%  
 Palm Beach: 3%

## Avg. Time to Close Over Last 12 Months

City Walk Pineapple Grove: 87 days  
 Delray Beach: 75 days  
 Palm Beach: 77 days



Built in 2006 - 40 units - 4 floors