

Unit 4644 Cadiz Cir - Paloma

4644 Cadiz Cir - 5001-5099 Dulce Ct, Palm Beach Gardens, FL, Palm Beach 33418

Unit Information

MLS Number: RX-11146259
Status: Active
Size: 1,939 Sq ft.
Bedrooms: 3
Full Bathrooms: 2
Half Bathrooms: 1
Parking Spaces: 2+ Spaces, Driveway, Garage - Attached, Vehicle Restrictions
View: Garden, Lake
Rental Price: \$4,850
List PPSF: \$3
Valuated Price: \$694,000
Valuated PPSF: \$358

The above valuated price is a baseline figure that does not take into account any specific renovation, upgrade, split, merge, or deterioration of the unit.

Building Information

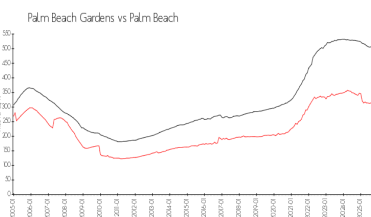
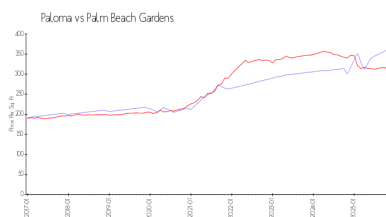
Number of units: 196
Number of active listings for rent: 0
Number of active listings for sale: 0
Building inventory for sale: 0%
Number of sales over the last 12 months: 13
Number of sales over the last 6 months: 6
Number of sales over the last 3 months: 1

Building Association Information

Paloma
Campbell Property Management
jupiter@campbellproperty.com
401 Maplewood Dr. Suite 23
Jupiter, FL 33458
Phone: 561-203-7910
Fax: 561-277-2481

<https://mypalomahoa.com/paloma/home.asp>

Market Information



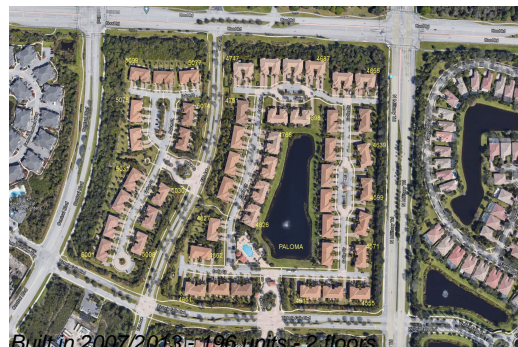
Paloma:	\$358/sq. ft.	Palm Beach	\$309/sq. ft.
Palm Beach	\$309/sq. ft.	Gardens:	\$452/sq. ft.
Gardens:		Palm Beach:	

Inventory for Sale

Paloma	0%
Palm Beach Gardens	2%
Palm Beach	3%

Avg. Time to Close Over Last 12 Months

Paloma	58 days
Palm Beach Gardens	66 days



Palm Beach

77 days