

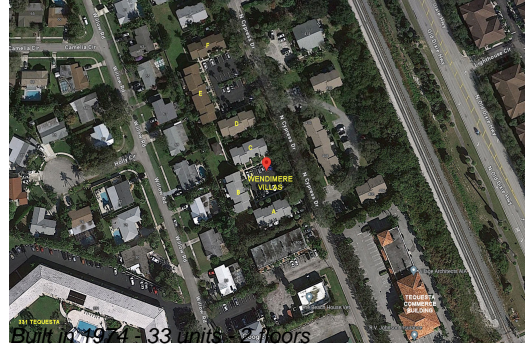
# Unit 413 N Cypress Dr # 4D - Wendimere Villas

413 N Cypress Dr # 4D - 407 N Cypress Dr, Jupiter, FL, Palm Beach 33469

## Unit Information

MLS Number:	RX-11150065
Status:	Active
Size:	1,024 Sq ft.
Bedrooms:	2
Full Bathrooms:	1
Half Bathrooms:	1
Parking Spaces:	Assigned
View:	
Rental Price:	\$2,550
List PPSF:	\$2
Valuated Price:	\$288,000
Valuated PPSF:	\$281

The above valuated price is a baseline figure that does not take into account any specific renovation, upgrade, split, merge, or deterioration of the unit.



## Building Information

Number of units:	33
Number of active listings for rent:	0
Number of active listings for sale:	2
Building inventory for sale:	6%
Number of sales over the last 12 months:	3
Number of sales over the last 6 months:	3
Number of sales over the last 3 months:	1

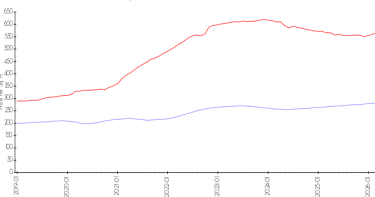
## Building Association Information

Windemere Owners Association  
 FirstService Residential  
 2950 North 28th Terrace  
 Hollywood, Florida 33020

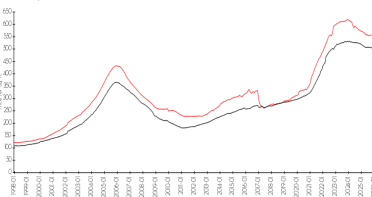
<https://www.fsresidential.com/florida/news-events/press-releases/firstservice-re>

## Market Information

Wendimere Villas vs Jupiter



Jupiter vs Palm Beach



Wendimere Villas: \$281/sq. ft.  
 Jupiter: \$568/sq. ft.

Jupiter: \$568/sq. ft.  
 Palm Beach: \$454/sq. ft.

## Inventory for Sale

Wendimere Villas	6%
Jupiter	7%
Palm Beach	6%

## Avg. Time to Close Over Last 12 Months

Wendimere Villas	39 days
Jupiter	84 days
Palm Beach	78 days