

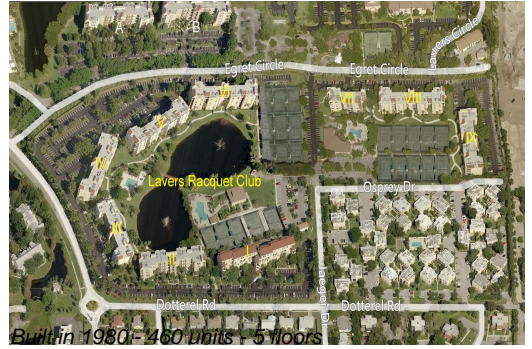
Unit 1112 - Lavers Delray Racquet Club I to IX

1112 - 950 Egret Cir, Delray Beach, FL, Palm Beach 33444

Unit Information

MLS Number: RX-11169202
 Status: Active
 Size: 1,175 Sq ft.
 Bedrooms: 2
 Full Bathrooms: 2
 Half Bathrooms: 0
 Parking Spaces: Assigned, Guest
 View: Tennis
 Rental Price: \$3,500
 List PPSF: \$3
 Valuated Price: \$269,000
 Valuated PPSF: \$229

The above valuated price is a baseline figure that does not take into account any specific renovation, upgrade, split, merge, or deterioration of the unit.



Building Information

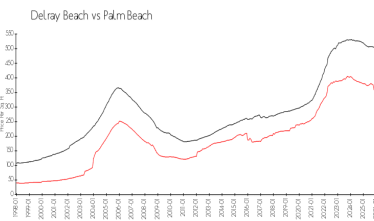
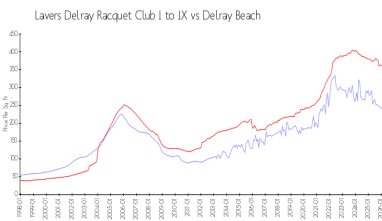
Number of units: 460
 Number of active listings for rent: 16
 Number of active listings for sale: 21
 Building inventory for sale: 4%
 Number of sales over the last 12 months: 26
 Number of sales over the last 6 months: 8
 Number of sales over the last 3 months: 6

Building Association Information

Lavers Of Delray Racquet Club,
 Delray Racquet Club Association, Inc
 610 Egret Circle
 Delray Beach, FL 33444-7930
 (561) 276-3792

<https://>

Market Information



Lavers Delray Racquet Club I to IX:	\$239/sq. ft.	Delray Beach:	\$360/sq. ft.
Delray Beach:	\$360/sq. ft.	Palm Beach:	\$454/sq. ft.

Inventory for Sale

Lavers Delray Racquet Club I to IX: 5%
 Delray Beach: 4%
 Palm Beach: 6%

Avg. Time to Close Over Last 12 Months

Lavers Delray Racquet Club I to IX: 79 days
 Delray Beach: 75 days
 Palm Beach: 78 days