

Unit 31050 Whitlock Dr - Whitelock at Meadow Pointe

31050 Whitlock Dr - 30821-31206 Whitelock Dr, Wesley Chapel, FL, Pasco 33542

Unit Information

MLS Number:	T3519242
Status:	ACTIVE
Size:	1,551 Sq ft.
Bedrooms:	2
Full Bathrooms:	2
Half Bathrooms:	0
Parking Spaces:	
View:	
List Price:	\$340,000
List PPSF:	\$219
Valuated Price:	\$299,000
Valuated PPSF:	\$193

The above valuated price is a baseline figure that does not take into account any specific renovation, upgrade, split, merge, or deterioration of the unit.

Building Information

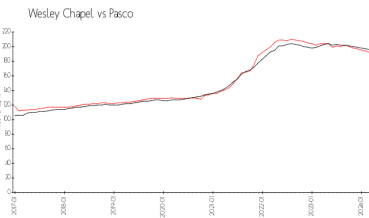
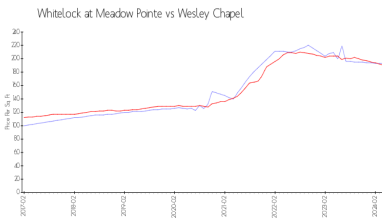
Number of units:	222
Number of active listings for rent:	0
Number of active listings for sale:	0
Building inventory for sale:	0%
Number of sales over the last 12 months:	0
Number of sales over the last 6 months:	0
Number of sales over the last 3 months:	0

Building Association Information

Meadow Pointe
 Community Development District
 28245 County Line Road
 Wesley Chapel, FL 33543
 P: (813) 973-1671
 F: (813) 973-7268

<https://www.meadowpointecdd.com/>

Market Information

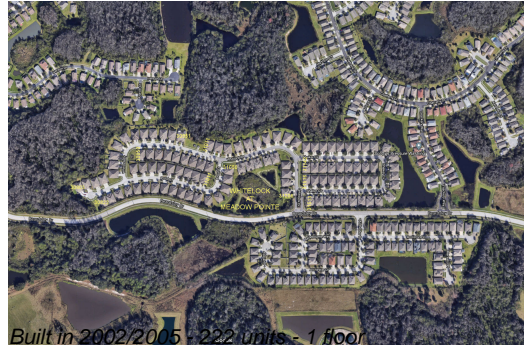


Whitelock at Meadow Pointe:	\$193/sq. ft.	Wesley Chapel:	\$190/sq. ft.
Wesley Chapel:	\$190/sq. ft.	Pasco:	\$192/sq. ft.

Inventory for Sale

Whitelock at Meadow Pointe	0%
Wesley Chapel	1%
Pasco	1%

Avg. Time to Close Over Last 12 Months



Whitelock at Meadow Pointe
Wesley Chapel
Pasco

37 days
36 days
43 days