

Unit 37618 Daliha Ter - Eiland Park Townhomes

37618 Daliha Ter - 6246-6379 Timberly Ln, Zephyrhills, FL, Pasco 33542

Unit Information

MLS Number:	T3537714
Status:	ACTIVE
Size:	1,363 Sq ft.
Bedrooms:	3
Full Bathrooms:	2
Half Bathrooms:	1
Parking Spaces:	Assigned, Guest, On Street, Open
View:	
List Price:	\$225,000
List PPSF:	\$165
Valuated Price:	\$178,000
Valuated PPSF:	\$131

The above valuated price is a baseline figure that does not take into account any specific renovation, upgrade, split, merge, or deterioration of the unit.

Building Information

Number of units:	220
Number of active listings for rent:	0
Number of active listings for sale:	3
Building inventory for sale:	1%
Number of sales over the last 12 months:	3
Number of sales over the last 6 months:	0
Number of sales over the last 3 months:	0

Building Association Information

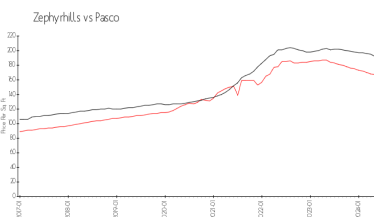
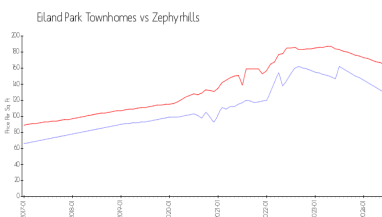
EILAND PARK TOWNHOMES ASSOCIATION
 Rizzetta & Company
 5844 Old Pasco Rd - Ste. 100
 Wesley Chapel, FL 33544
 Phone 813-994-1001
 Fax: 813-994-2100

<http://www.eilandparkhoa.com/eilandpark/>

Recent Sales

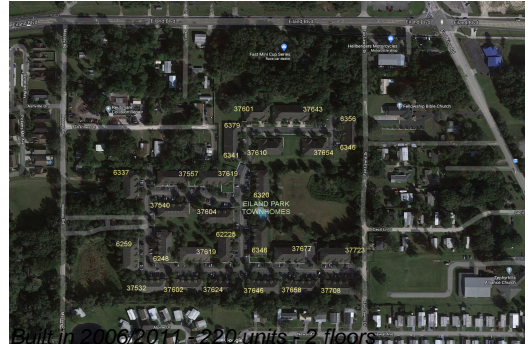
Unit #	Size	Closing Date	Sale Price	PPSF
	1,561 sq ft	Jan 2024	\$224,900	\$144
	1,561 sq ft	Aug 2023	\$225,000	\$144
	1,561 sq ft	Jul 2023	\$229,500	\$147

Market Information



Eiland Park Townhomes:	\$130/sq. ft.	Zephyrhills:	\$165/sq. ft.
Zephyrhills:	\$165/sq. ft.	Pasco:	\$191/sq. ft.

Inventory for Sale



Eiland Park Townhomes	1%
Zephyrhills	1%
Pasco	1%

Avg. Time to Close Over Last 12 Months

Eiland Park Townhomes	81 days
Zephyrhills	50 days
Pasco	53 days