

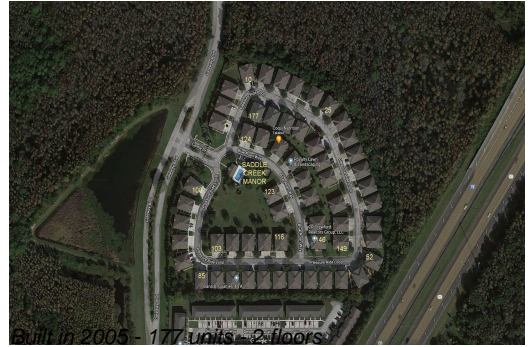
Unit 27921 Pleasure Ride Loop - Saddle Creek Manor

27921 Pleasure Ride Loop - 27511-27929 Pleasure Rice Loop, Wesley Chapel, FL, Pasco 33544

Unit Information

MLS Number: T3539665
 Status: ACTIVE
 Size: 1,513 Sq ft.
 Bedrooms: 3
 Full Bathrooms: 2
 Half Bathrooms: 1
 Parking Spaces:
 View:
 Rental Price: \$2,090
 List PPSF: \$1
 Valuated Price: \$256,000
 Valuated PPSF: \$169

The above valuated price is a baseline figure that does not take into account any specific renovation, upgrade, split, merge, or deterioration of the unit.



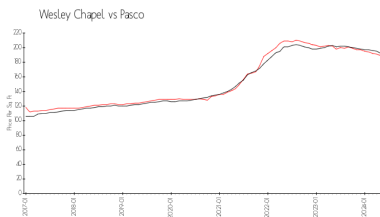
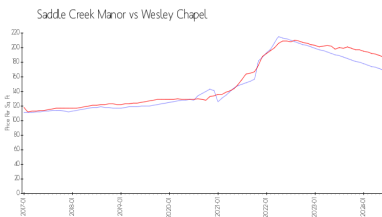
Building Information

Number of units: 177
 Number of active listings for rent: 0
 Number of active listings for sale: 1
 Building inventory for sale: 0%
 Number of sales over the last 12 months: 2
 Number of sales over the last 6 months: 0
 Number of sales over the last 3 months: 0

Building Association Information

Saddle Creek Manor Townhomes
 14512 N. Nebraska Ave #104
 Tampa, FL 33613
 Phone : (813) 337-6206
 Email :saddlecreek@procuraservices.com

Market Information



Saddle Creek Manor: \$169/sq. ft.
 Wesley Chapel: \$187/sq. ft.

Wesley Chapel: \$187/sq. ft.
 Pasco: \$191/sq. ft.

Inventory for Sale

Saddle Creek Manor 1%
 Wesley Chapel 1%
 Pasco 1%

Avg. Time to Close Over Last 12 Months

Saddle Creek Manor 19 days
 Wesley Chapel 37 days
 Pasco 53 days