

Unit 6335 Maisie Rd - Eiland Park Townhomes

6335 Maisie Rd - 6246-6379 Timberly Ln, Zephyrhills, FL, Pasco 33542

Unit Information

MLS Number: T3551586
 Status: Active
 Size: 1,363 Sq ft.
 Bedrooms: 3
 Full Bathrooms: 2
 Half Bathrooms: 1
 Parking Spaces:
 View:
 List Price: \$1,850
 List PPSF: \$1
 Valuated Price: \$190,000
 Valuated PPSF: \$139

The above valuated price is a baseline figure that does not take into account any specific renovation, upgrade, split, merge, or deterioration of the unit.

Building Information

Number of units: 220
 Number of active listings for rent: 0
 Number of active listings for sale: 4
 Building inventory for sale: 1%
 Number of sales over the last 12 months: 1
 Number of sales over the last 6 months: 0
 Number of sales over the last 3 months: 0

Building Association Information

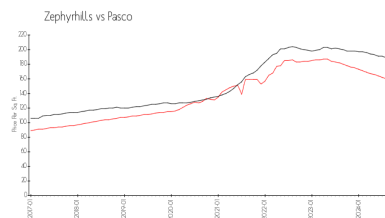
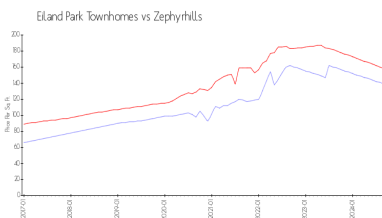
EILAND PARK TOWNHOMES ASSOCIATION
 Rizzetta & Company
 5844 Old Pasco Rd - Ste. 100
 Wesley Chapel, FL 33544
 Phone 813-994-1001
 Fax: 813-994-2100

<http://www.eilandparkhoa.com/eilandpark/>

Recent Sales

| Unit # | Size | Closing Date | Sale Price | PPSF |
|--------|-------------|--------------|------------|-------|
| | 1,561 sq ft | Jan 2024 | \$224,900 | \$144 |

Market Information

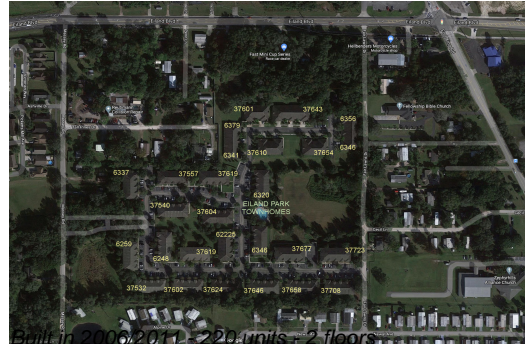


| | | | |
|------------------------|---------------|--------------|---------------|
| Eiland Park Townhomes: | \$139/sq. ft. | Zephyrhills: | \$158/sq. ft. |
| Zephyrhills: | \$158/sq. ft. | Pasco: | \$187/sq. ft. |

Inventory for Sale

Eiland Park Townhomes: 2%
 Zephyrhills: 1%
 Pasco: 1%

Avg. Time to Close Over Last 12 Months



Eiland Park Townhomes
Zephyrhills
Pasco

113 days
52 days
59 days