

Unit 4145 Barletta Ct - Santeri Villas at Estancia

4145 Barletta Ct - 4104-4623 Barletta Ct, Wesley Chapel, FL, Pasco 33543

Unit Information

MLS Number: TB8305388
 Status: PENDING
 Size: 2,097 Sq ft.
 Bedrooms: 2
 Full Bathrooms: 2
 Half Bathrooms: 0
 Parking Spaces:
 View: Trees/Woods
 List Price: \$480,000
 List PPSF: \$229
 Valuated Price: \$513,000
 Valuated PPSF: \$245

The above valuated price is a baseline figure that does not take into account any specific renovation, upgrade, split, merge, or deterioration of the unit.

Building Information

Number of units: 96
 Number of active listings for rent: 0
 Number of active listings for sale: 4
 Building inventory for sale: 4%
 Number of sales over the last 12 months: 2
 Number of sales over the last 6 months: 2
 Number of sales over the last 3 months: 2

Building Association Information

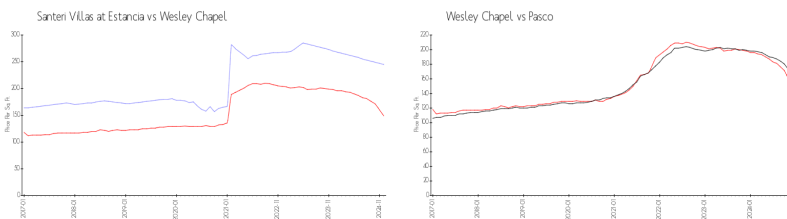
WCI at Estancia
 Address: 29242 Picana Ln,
 Wesley Chapel, FL 33543
 Phone: +1 844-482-8335

<https://estanciawiregrasscdd.com/hoa-information>

Recent Sales

Unit #	Size	Closing Date	Sale Price	PPSF
	1,861 sq ft	Jan 2025	\$470,000	\$253
	1,861 sq ft	Dec 2024	\$478,000	\$257

Market Information

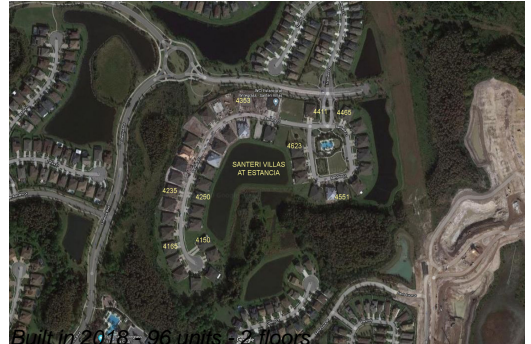
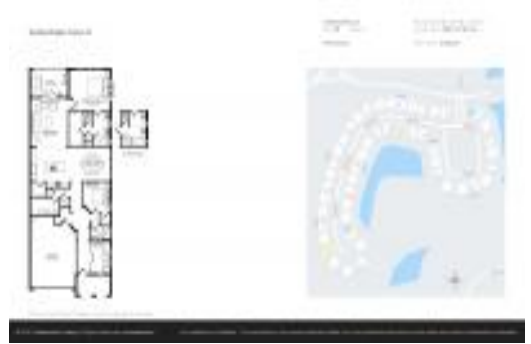


Santeri Villas at Estancia:	\$245/sq. ft.	Wesley Chapel:	\$149/sq. ft.
Wesley Chapel:	\$149/sq. ft.	Pasco:	\$160/sq. ft.

Inventory for Sale

Santeri Villas at Estancia: 4%
 Wesley Chapel: 1%
 Pasco: 1%

Avg. Time to Close Over Last 12 Months



Santeri Villas at Estancia
Wesley Chapel
Pasco

91 days
74 days
66 days