

Unit 37650 Aaralyn Rd - Eiland Park Townhomes

37650 Aaralyn Rd - 6246-6379 Timberly Ln, Zephyrhills, FL, Pasco 33542

Unit Information

MLS Number:	TB8336452
Status:	ACTIVE
Size:	1,561 Sq ft.
Bedrooms:	2
Full Bathrooms:	2
Half Bathrooms:	1
Parking Spaces:	Guest, Reserved
View:	
List Price:	\$220,000
List PPSF:	\$141
Valuated Price:	\$221,000
Valuated PPSF:	\$142

The above valuated price is a baseline figure that does not take into account any specific renovation, upgrade, split, merge, or deterioration of the unit.

Building Information

Number of units:	220
Number of active listings for rent:	0
Number of active listings for sale:	4
Building inventory for sale:	1%
Number of sales over the last 12 months:	6
Number of sales over the last 6 months:	3
Number of sales over the last 3 months:	1

Building Association Information

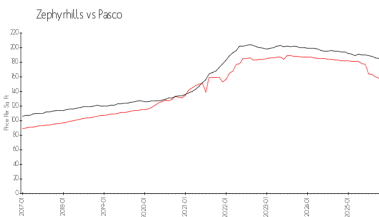
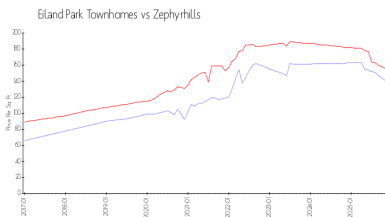
EILAND PARK TOWNHOMES ASSOCIATION
Rizzetta & Company
5844 Old Pasco Rd - Ste. 100
Wesley Chapel, FL 33544
Phone 813-994-1001
Fax: 813-994-2100

<https://www.eilandparkhoa.com/eilandpark/>

Recent Sales

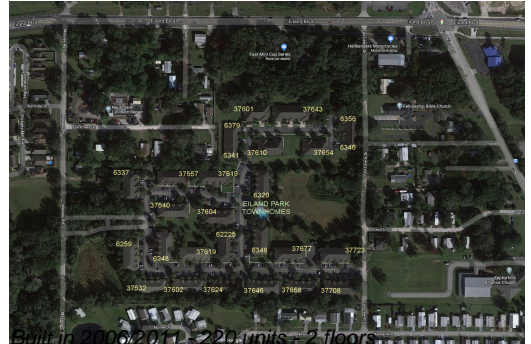
Unit #	Size	Closing Date	Sale Price	PPSF
	1,561 sq ft	Oct 2025	\$207,000	\$133
	1,567 sq ft	Aug 2025	\$235,000	\$150
	1,363 sq ft	Aug 2025	\$206,000	\$151
	1,561 sq ft	May 2025	\$190,000	\$122
	1,363 sq ft	Apr 2025	\$222,000	\$163

Market Information



Eiland Park Townhomes:	\$141/sq. ft.	Zephyrhills:	\$156/sq. ft.
Zephyrhills:	\$156/sq. ft.	Pasco:	\$180/sq. ft.

Inventory for Sale



Eiland Park Townhomes	2%
Zephyrhills	2%
Pasco	1%

Avg. Time to Close Over Last 12 Months

Eiland Park Townhomes	128 days
Zephyrhills	171 days
Pasco	90 days