

Unit 4155 Barletta Ct - Santeri Villas at Estancia

4155 Barletta Ct - 4104-4623 Barletta Ct, Wesley Chapel, FL, Pasco 33543

Unit Information

MLS Number: TB8392551
 Status: ACTIVE
 Size: 2,097 Sq ft.
 Bedrooms: 2
 Full Bathrooms: 2
 Half Bathrooms: 0
 Parking Spaces:
 View:
 List Price: \$464,000
 List PPSF: \$221
 Valuated Price: \$473,000
 Valuated PPSF: \$226

The above valuated price is a baseline figure that does not take into account any specific renovation, upgrade, split, merge, or deterioration of the unit.

Building Information

Number of units: 96
 Number of active listings for rent: 0
 Number of active listings for sale: 7
 Building inventory for sale: 7%
 Number of sales over the last 12 months: 4
 Number of sales over the last 6 months: 1
 Number of sales over the last 3 months: 1

Building Association Information

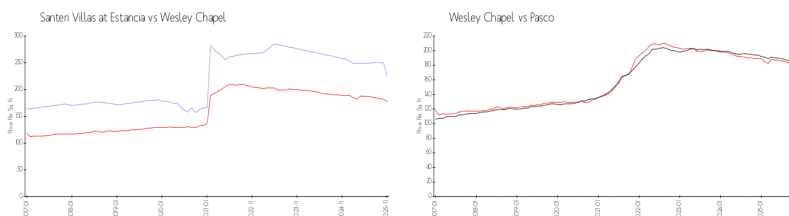
WCI at Estancia
 Address: 29242 Picana Ln,
 Wesley Chapel, FL 33543
 Phone: +1 844-482-8335

<https://estanciawiregrasscdd.com/hoa-information>

Recent Sales

Unit #	Size	Closing Date	Sale Price	PPSF
	1,861 sq ft	Oct 2025	\$465,000	\$250
	1,861 sq ft	Feb 2025	\$475,000	\$255
	2,097 sq ft	Feb 2025	\$470,000	\$224
	1,861 sq ft	Jan 2025	\$470,000	\$253

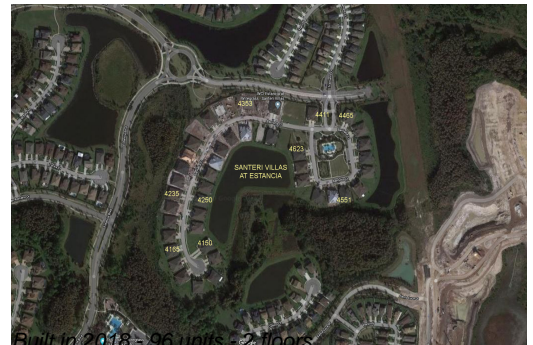
Market Information



Santeri Villas at Estancia:	\$226/sq. ft.	Wesley Chapel:	\$178/sq. ft.
Wesley Chapel:	\$178/sq. ft.	Pasco:	\$180/sq. ft.

Inventory for Sale

Santeri Villas at Estancia	7%
Wesley Chapel	2%
Pasco	1%



Avg. Time to Close Over Last 12 Months

Santeri Villas at Estancia	111 days
Wesley Chapel	100 days
Pasco	90 days