

# Unit 26628 Castleview Way - Bay at Cypress Creek

26628 Castleview Way - 26517-26655 Castleview Wy, Wesley Chapel, FL, Pasco 33544

## Unit Information

MLS Number:	TB8435716
Status:	ACTIVE
Size:	1,545 Sq ft.
Bedrooms:	3
Full Bathrooms:	2
Half Bathrooms:	1
Parking Spaces:	Driveway
View:	
List Price:	\$269,000
List PPSF:	\$174
Valuated Price:	\$254,000
Valuated PPSF:	\$164

*The above valuated price is a baseline figure that does not take into account any specific renovation, upgrade, split, merge, or deterioration of the unit.*

## Building Information

Number of units:	176
Number of active listings for rent:	0
Number of active listings for sale:	2
Building inventory for sale:	1%
Number of sales over the last 12 months:	3
Number of sales over the last 6 months:	2
Number of sales over the last 3 months:	2

## Building Association Information

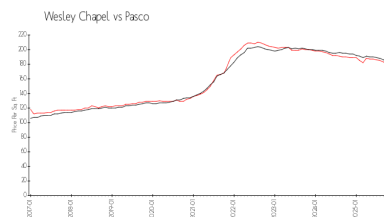
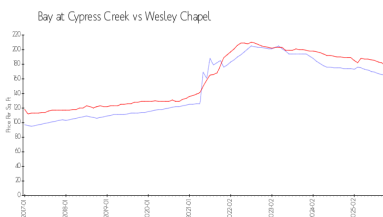
The Bay at Cypress Creek  
Homeowner's Association  
Management and Associates  
720 Brooker Creek Blvd. #206  
Oldsmar, FL 34677  
813-433-2000 Ext. 2007

<https://wildwoods.wordpress.com/>

## Recent Sales

Unit #	Size	Closing Date	Sale Price	PPSF
	1,588 sq ft	Oct 2025	\$250,000	\$157
	1,588 sq ft	Oct 2025	\$260,000	\$164
	1,588 sq ft	Mar 2025	\$280,000	\$176

## Market Information

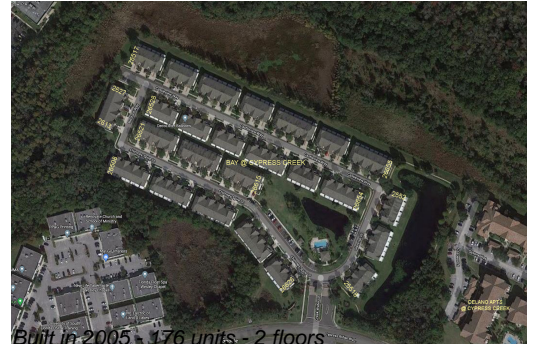


Bay at Cypress Creek: \$165/sq. ft.  
Wesley Chapel: \$178/sq. ft.

Wesley Chapel: \$178/sq. ft.  
Pasco: \$180/sq. ft.

## Inventory for Sale

Bay at Cypress Creek 1%



Wesley Chapel	2%
Pasco	1%

**Avg. Time to Close Over Last 12 Months**

Bay at Cypress Creek	221 days
Wesley Chapel	100 days
Pasco	90 days