

Unit 1228 Bensbrooke Dr - Larkenheath at Meadow Pointe

1228 Bensbrooke Dr - 31744-31825 Blythewood Wy, Wesley Chapel, FL, Pasco 33543

Unit Information

MLS Number:	TB8455273
Status:	ACTIVE
Size:	1,703 Sq ft.
Bedrooms:	2
Full Bathrooms:	2
Half Bathrooms:	0
Parking Spaces:	Driveway, Garage Door Opener
View:	Trees/Woods
Rental Price:	\$2,100
List PPSF:	\$1
Valuated Price:	\$317,000
Valuated PPSF:	\$186

The above valuated price is a baseline figure that does not take into account any specific renovation, upgrade, split, merge, or deterioration of the unit.

Building Information

Number of units:	209
Number of active listings for rent:	0
Number of active listings for sale:	2
Building inventory for sale:	0%
Number of sales over the last 12 months:	6
Number of sales over the last 6 months:	4
Number of sales over the last 3 months:	3

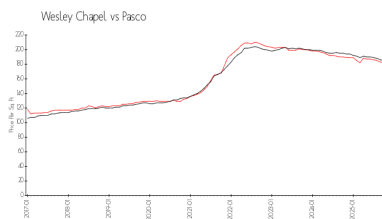
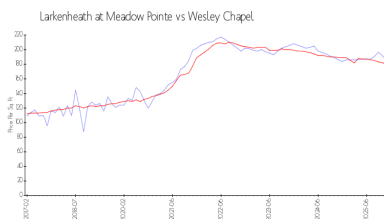
Building Association Information

Meadow Point IV
Rizzetta & Company, Inc.

5844 Old Pasco Road Suite 100
Tampa, FL 33544
Ph. 813-994-1001

<https://www.rizzetta.com>

Market Information



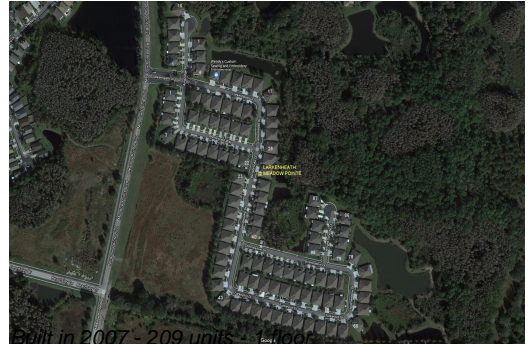
Larkenheath at Meadow Pointe:	\$186/sq. ft.	Wesley Chapel:	\$178/sq. ft.
Wesley Chapel:	\$178/sq. ft.	Pasco:	\$180/sq. ft.

Inventory for Sale

Larkenheath at Meadow Pointe	1%
Wesley Chapel	2%
Pasco	1%

Avg. Time to Close Over Last 12 Months

Larkenheath at Meadow Pointe	95 days
Wesley Chapel	100 days



Pasco

90 days