

Unit 6341 Timberly Ln - Eiland Park Townhomes

6341 Timberly Ln - 6246-6379 Timberly Ln, Zephyrhills, FL, Pasco 33542

Unit Information

MLS Number: U8175813
 Status: ACTIVE
 Size: 1,567 Sq ft.
 Bedrooms: 3
 Full Bathrooms: 2
 Half Bathrooms: 0
 Parking Spaces: Driveway
 View:
 List Price: \$289,900
 List PPSF: \$185
 Valuated Price: \$230,000
 Valuated PPSF: \$147

The above valuated price is a baseline figure that does not take into account any specific renovation, upgrade, split, merge, or deterioration of the unit.

Building Information

Number of units: 220
 Number of active listings for rent: 0
 Number of active listings for sale: 2
 Building inventory for sale: 0%
 Number of sales over the last 12 months: 6
 Number of sales over the last 6 months: 1
 Number of sales over the last 3 months: 1

Building Association Information

EILAND PARK TOWNHOMES ASSOCIATION
 Rizzetta & Company
 5844 Old Pasco Rd - Ste. 100
 Wesley Chapel, FL 33544
 Phone 813-994-1001
 Fax: 813-994-2100

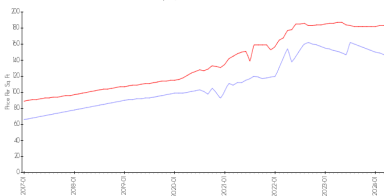
<http://www.eilandparkhoa.com/eilandpark/>

Recent Sales

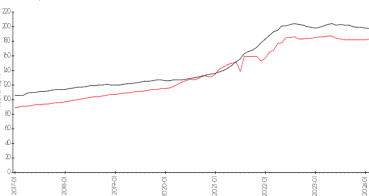
Unit #	Size	Closing Date	Sale Price	PPSF
	1,561 sq ft	Jan 2024	\$224,900	\$144
	1,561 sq ft	Aug 2023	\$225,000	\$144
	1,561 sq ft	Jul 2023	\$229,500	\$147
239	1,363 sq ft	Jul 2023	\$240,000	\$176
	1,531 sq ft	Jun 2023	\$230,001	\$150

Market Information

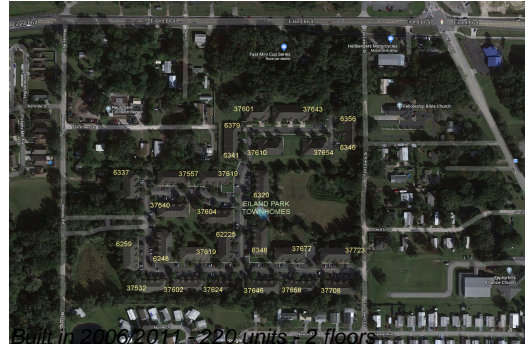
Eiland Park: Townhomes vs Zephyrhills



Zephyrhills vs Pasco



Eiland Park Townhomes: \$147/sq. ft.
 Zephyrhills: \$183/sq. ft.
 Zephyrhills: \$183/sq. ft.
 Pasco: \$195/sq. ft.



Inventory for Sale

Eiland Park Townhomes	1%
Zephyrhills	1%
Pasco	1%

Avg. Time to Close Over Last 12 Months

Eiland Park Townhomes	52 days
Zephyrhills	41 days
Pasco	42 days