

# Unit E20 - Imperial Court

E20 - 1433 S Belcher Rd, Clearwater, FL, Pinellas 33764

## Unit Information

MLS Number:	T3469502
Status:	ACTIVE
Size:	932 Sq ft.
Bedrooms:	2
Full Bathrooms:	2
Half Bathrooms:	0
Parking Spaces:	
View:	
List Price:	\$155,000
List PPSF:	\$166

## Building Information

Number of units:	120
Number of active listings for rent:	0
Number of active listings for sale:	10
Building inventory for sale:	8%
Number of sales over the last 12 months:	12
Number of sales over the last 6 months:	7
Number of sales over the last 3 months:	0

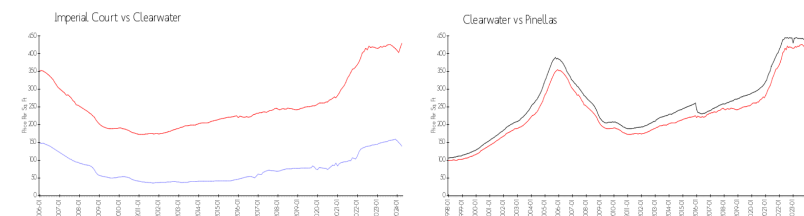
## Building Association Information

Imperial Court Condominium Apartments I Association Inc  
1433 S Belcher Rd  
Clearwater, Florida 33764-2893  
FIRST CHOICE ASSOCIATION MANAGEMENT INC  
727-785-8887

## Recent Sales

Unit #	Size	Closing Date	Sale Price	PPSF
C12	642 sq ft	Jan 2024	\$100,000	\$156
E6	642 sq ft	Jan 2024	\$105,500	\$164
G13	855 sq ft	Jan 2024	\$128,000	\$150
G11	1,032 sq ft	Jan 2024	\$135,000	\$131
6	642 sq ft	Dec 2023	\$99,000	\$154
G16	642 sq ft	Dec 2023	\$96,000	\$150
E8	855 sq ft	Dec 2023	\$147,000	\$172

## Market Information

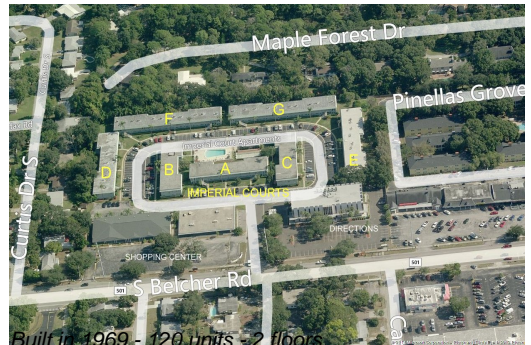


Imperial Court:	\$139/sq. ft.	Clearwater:	\$430/sq. ft.
Clearwater:	\$430/sq. ft.	Pinellas:	\$417/sq. ft.

## Inventory for Sale

Imperial Court	8%
Clearwater	4%
Pinellas	3%

## Avg. Time to Close Over Last 12 Months



Imperial Court  
Clearwater  
Pinellas

68 days  
60 days  
60 days