

Unit 2753 Countryside Blvd # 105 - Bryn Mawr at Countryside

2753 Countryside Blvd # 105 - 2701-2765 Countryside Blvd, Clearwater, FL, Pinellas 33761

Unit Information

MLS Number:	T3484690
Status:	ACTIVE
Size:	1,135 Sq ft.
Bedrooms:	2
Full Bathrooms:	2
Half Bathrooms:	0
Parking Spaces:	Assigned, Covered, Guest
View:	
List Price:	\$250,000
List PPSF:	\$220

Building Information

Number of units:	112
Number of active listings for rent:	0
Number of active listings for sale:	5
Building inventory for sale:	4%
Number of sales over the last 12 months:	1
Number of sales over the last 6 months:	0
Number of sales over the last 3 months:	0

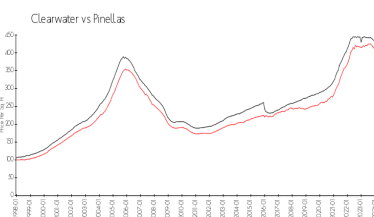
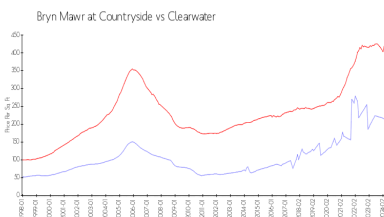
Building Association Information

BRYN MAWR AT COUNTRYSIDE CONDOMINIUM ASSOCIATION, INC.
 PROGRESSIVE MANAGEMENT, INC.
 4151 WOODLANDS PKWY
 PALM HARBOR FL 34685
 727-773-9542

Recent Sales

Unit #	Size	Closing Date	Sale Price	PPSF
107	1,005 sq ft	Jul 2023	\$235,000	\$234

Market Information



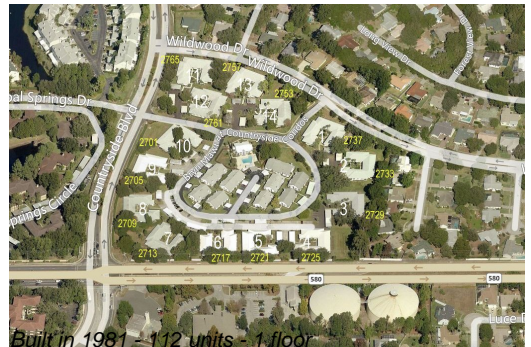
Bryn Mawr at Countryside:	\$215/sq. ft.	Clearwater:	\$430/sq. ft.
Clearwater:	\$430/sq. ft.	Pinellas:	\$417/sq. ft.

Inventory for Sale

Bryn Mawr at Countryside	4%
Clearwater	4%
Pinellas	3%

Avg. Time to Close Over Last 12 Months

Bryn Mawr at Countryside	49 days
Clearwater	60 days



Pinellas

60 days