

# Unit 3638 Trafalgar Way # 103 - Waterford at Palm Harbor

3638 Trafalgar Way # 103 - 3510-3588 Wembley Wy, Palm Harbor, FL, Pinellas 33685

## Unit Information

MLS Number: T3502134  
 Status: ACTIVE  
 Size: 1,154 Sq ft.  
 Bedrooms: 2  
 Full Bathrooms: 2  
 Half Bathrooms: 0  
 Parking Spaces:  
 View: Garden  
 List Price: \$329,000  
 List PPSF: \$285

## Building Information

Number of units: 170  
 Number of active listings for rent: 0  
 Number of active listings for sale: 2  
 Building inventory for sale: 1%  
 Number of sales over the last 12 months: 9  
 Number of sales over the last 6 months: 3  
 Number of sales over the last 3 months: 0

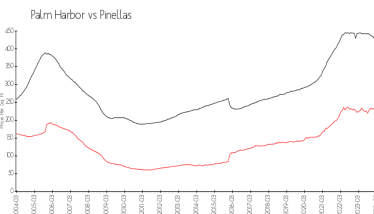
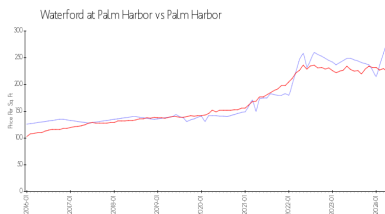
## Building Association Information

Waterford Luxury Condominium  
 3690 Kings Rd,  
 Palm Harbor, FL 34685  
 (727) 784-9313

## Recent Sales

Unit #	Size	Closing Date	Sale Price	PPSF
106	1,029 sq ft	Jan 2024	\$245,000	\$238
102	1,559 sq ft	Jan 2024	\$300,000	\$192
105	1,559 sq ft	Dec 2023	\$353,700	\$227
102	1,631 sq ft	Nov 2023	\$370,000	\$227
105	1,559 sq ft	Oct 2023	\$372,000	\$239

## Market Information

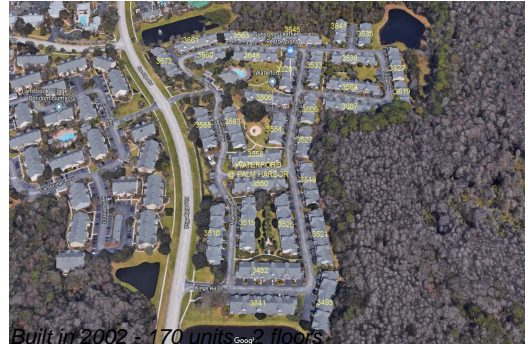


Waterford at Palm Harbor:	\$280/sq. ft.	Palm Harbor:	\$224/sq. ft.
Palm Harbor:	\$224/sq. ft.	Pinellas:	\$417/sq. ft.

## Inventory for Sale

Waterford at Palm Harbor 1%  
 Palm Harbor 2%  
 Pinellas 3%

## Avg. Time to Close Over Last 12 Months



Waterford at Palm Harbor  
Palm Harbor  
Pinellas

33 days  
32 days  
60 days