

# Unit 1228 S Missouri Ave # 607 - Avalon at Clearwater (1222 to 1240)

1228 S Missouri Ave # 607 - 1222 S Missouri Ave, Clearwater, FL, Pinellas 33756

## Unit Information

MLS Number:	T3527577
Status:	ACTIVE
Size:	730 Sq ft.
Bedrooms:	1
Full Bathrooms:	1
Half Bathrooms:	0
Parking Spaces:	
View:	Pool
List Price:	\$325,000
List PPSF:	\$445
Valuated Price:	\$244,000
Valuated PPSF:	\$348

The above valuated price is a baseline figure that does not take into account any specific renovation, upgrade, split, merge, or deterioration of the unit.

## Building Information

Number of units:	200
Number of active listings for rent:	0
Number of active listings for sale:	1
Building inventory for sale:	0%
Number of sales over the last 12 months:	8
Number of sales over the last 6 months:	4
Number of sales over the last 3 months:	2

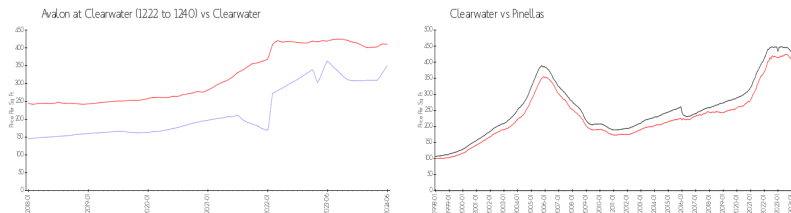
## Building Association Information

Avalon At Clearwater  
 Address: 1220 S Missouri Ave,  
 Clearwater, FL 33756

## Recent Sales

Unit #	Size	Closing Date	Sale Price	PPSF
908	701 sq ft	Jun 2024	\$254,000	\$362
507	730 sq ft	Jun 2024	\$227,000	\$311
905	730 sq ft	Apr 2024	\$224,000	\$307
515	730 sq ft	Mar 2024	\$214,000	\$293
214	1,096 sq ft	Dec 2023	\$318,000	\$290

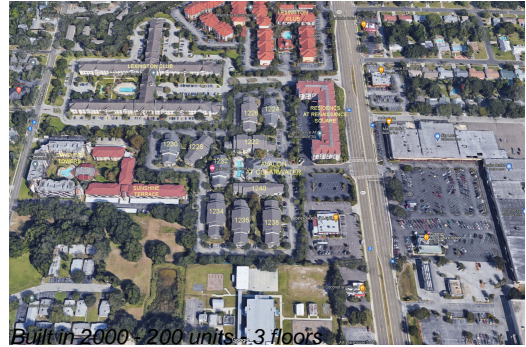
## Market Information



Avalon at Clearwater (1222 to 1240):	\$350/sq. ft.	Clearwater:	\$410/sq. ft.
Clearwater:	\$410/sq. ft.	Pinellas:	\$417/sq. ft.

## Inventory for Sale

Avalon at Clearwater (1222 to 1240)	1%
Clearwater	3%
Pinellas	3%



**Avg. Time to Close Over Last 12 Months**

Avalon at Clearwater (1222 to 1240)	64 days
Clearwater	70 days
Pinellas	68 days