

# Unit 3372 Covered Bridge Dr E - Covered Bridge Townhomes

3372 Covered Bridge Dr E - 3291-3384 Covered Bridge Dr E, Dunedin, FL, Pinellas 34698

## Unit Information

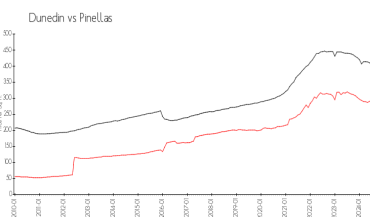
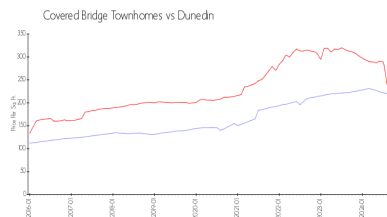
MLS Number:	T3532057
Status:	Active
Size:	2,027 Sq ft.
Bedrooms:	3
Full Bathrooms:	2
Half Bathrooms:	1
Parking Spaces:	
View:	
Rental Price:	\$3,000
List PPSF:	\$1
Valuated Price:	\$440,000
Valuated PPSF:	\$217

*The above valuated price is a baseline figure that does not take into account any specific renovation, upgrade, split, merge, or deterioration of the unit.*

## Building Information

Number of units:	88
Number of active listings for rent:	0
Number of active listings for sale:	1
Building inventory for sale:	1%
Number of sales over the last 12 months:	3
Number of sales over the last 6 months:	1
Number of sales over the last 3 months:	1

## Market Information



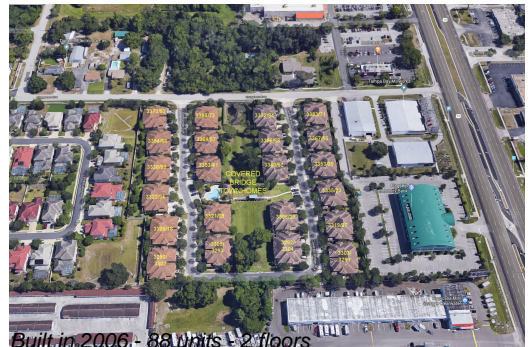
Covered Bridge Townhomes:	\$217/sq. ft.	Dunedin:	\$202/sq. ft.
Dunedin:	\$202/sq. ft.	Pinellas:	\$361/sq. ft.

## Inventory for Sale

Covered Bridge Townhomes	1%
Dunedin	3%
Pinellas	4%

## Avg. Time to Close Over Last 12 Months

Covered Bridge Townhomes	6 days
Dunedin	84 days
Pinellas	81 days



Built in 2006 - 88 units - 2 floors