

Unit 6363 93rd Ter N # 4506 - Lake Forest

6363 93rd Ter N # 4506 - 6236-6464 93 Ter N, Pinellas Park, FL, Pinellas 33782

Unit Information

MLS Number: T3547670
 Status: Active
 Size: 1,245 Sq ft.
 Bedrooms: 2
 Full Bathrooms: 2
 Half Bathrooms: 0
 Parking Spaces: Garage Door Opener
 View:
 List Price: \$220,000
 List PPSF: \$177
 Valuated Price: \$215,000
 Valuated PPSF: \$173

The above valuated price is a baseline figure that does not take into account any specific renovation, upgrade, split, merge, or deterioration of the unit.

Building Information

Number of units: 295
 Number of active listings for rent: 0
 Number of active listings for sale: 15
 Building inventory for sale: 5%
 Number of sales over the last 12 months: 12
 Number of sales over the last 6 months: 4
 Number of sales over the last 3 months: 1

Building Association Information

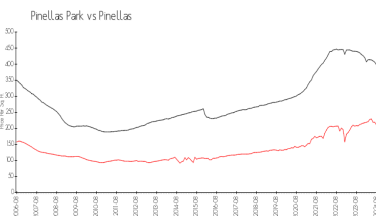
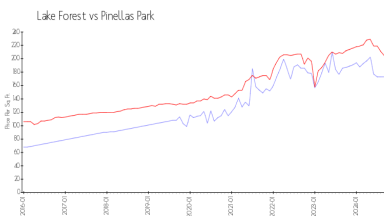
Lake Forest Condominium Association
 Address: 6350 93rd Terrace N,
 Pinellas Park, FL 33782
 Phone: +1 727-546-4764

<https://www.lakeforestcondoassn.com/>

Recent Sales

Unit #	Size	Closing Date	Sale Price	PPSF
2902	1,245 sq ft	Oct 2024	\$219,000	\$176
4706	1,620 sq ft	Jul 2024	\$280,000	\$173
802	1,190 sq ft	Jun 2024	\$170,000	\$143
1905	1,245 sq ft	Jun 2024	\$235,000	\$189
303	1,245 sq ft	May 2024	\$255,000	\$205
605	1,190 sq ft	May 2024	\$236,000	\$198

Market Information

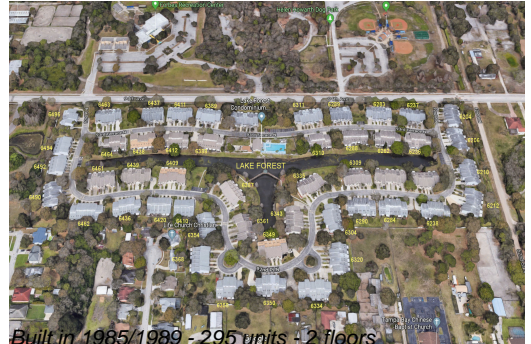


Lake Forest: \$173/sq. ft.
 Pinellas Park: \$205/sq. ft.

Pinellas Park: \$205/sq. ft.
 Pinellas: \$361/sq. ft.

Inventory for Sale

Lake Forest: 5%
 Pinellas Park: 3%
 Pinellas: 5%



Avg. Time to Close Over Last 12 Months

Lake Forest	30 days
Pinellas Park	36 days
Pinellas	80 days