

Unit 2438 Enterprise Rd # 6 - Villas at Countryside

2438 Enterprise Rd # 6 - 2438-2488 Enterprise Rd, Clearwater, FL, Pinellas 33763

Unit Information

MLS Number: T3548862
 Status: ACTIVE
 Size: 817 Sq ft.
 Bedrooms: 2
 Full Bathrooms: 1
 Half Bathrooms: 0
 Parking Spaces: Assigned, Guest
 View:
 List Price: \$224,900
 List PPSF: \$275
 Valuated Price: \$91,000
 Valuated PPSF: \$110

The above valuated price is a baseline figure that does not take into account any specific renovation, upgrade, split, merge, or deterioration of the unit.

Building Information

Number of units: 221
 Number of active listings for rent: 0
 Number of active listings for sale: 9
 Building inventory for sale: 4%
 Number of sales over the last 12 months: 7
 Number of sales over the last 6 months: 4
 Number of sales over the last 3 months: 3

Building Association Information

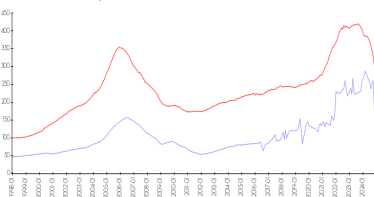
VILLAS AT COUNTRYSIDE
 CONDOMINIUM ASSOCIATION, INC.
 PROGRESSIVE MANAGEMENT, INC.
 4151 WOODLANDS PKWY PALM HARBOR FL 3468
 PHONE 727-773-9542
 FAX 727-773-8740

Recent Sales

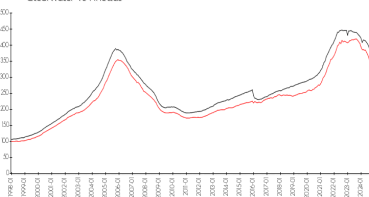
Unit #	Size	Closing Date	Sale Price	PPSF
3	593 sq ft	Jan 2025	\$160,000	\$270
1	593 sq ft	Nov 2024	\$157,750	\$266
2	1,063 sq ft	Nov 2024	\$205,000	\$193
5	817 sq ft	Oct 2024	\$225,000	\$275
1	593 sq ft	Jul 2024	\$143,000	\$241
2	817 sq ft	Jul 2024	\$233,450	\$286

Market Information

Villas at Countryside vs Clearwater



Clearwater vs Pinellas

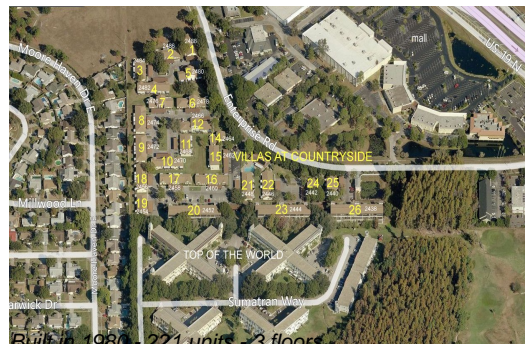


Villas at Countryside: \$110/sq. ft.
 Clearwater: \$273/sq. ft.

Clearwater: \$273/sq. ft.
 Pinellas: \$311/sq. ft.

Inventory for Sale

Villas at Countryside: 4%
 Clearwater: 5%
 Pinellas: 4%



Avg. Time to Close Over Last 12 Months

Villas at Countryside	30 days
Clearwater	95 days
Pinellas	85 days