

Unit A8 - Imperial Court

A8 - 1433 S Belcher Rd, Clearwater, FL, Pinellas 33764

Unit Information

MLS Number: T3552429
 Status: Active
 Size: 932 Sq ft.
 Bedrooms: 2
 Full Bathrooms: 2
 Half Bathrooms: 0
 Parking Spaces: 0
 View:
 List Price: \$159,000
 List PPSF: \$171
 Valuated Price: \$121,000
 Valuated PPSF: \$133

The above valuated price is a baseline figure that does not take into account any specific renovation, upgrade, split, merge, or deterioration of the unit.

Building Information

Number of units: 120
 Number of active listings for rent: 0
 Number of active listings for sale: 11
 Building inventory for sale: 9%
 Number of sales over the last 12 months: 9
 Number of sales over the last 6 months: 2
 Number of sales over the last 3 months: 0

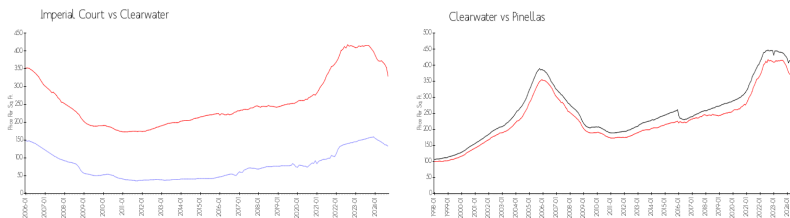
Building Association Information

Imperial Court Condominium Apartments I Association Inc
 1433 S Belcher Rd
 Clearwater, Florida 33764-2893
 FIRST CHOICE ASSOCIATION MANAGEMENT INC
 727-785-8887

Recent Sales

Unit #	Size	Closing Date	Sale Price	PPSF
F3	642 sq ft	Jul 2024	\$90,000	\$140
D7	642 sq ft	Jun 2024	\$80,000	\$125
C12	642 sq ft	Jan 2024	\$100,000	\$156
E6	642 sq ft	Jan 2024	\$105,500	\$164
G13	855 sq ft	Jan 2024	\$128,000	\$150
G11	1,032 sq ft	Jan 2024	\$135,000	\$131

Market Information

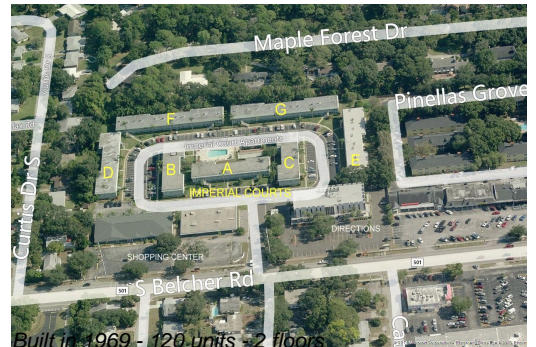


Imperial Court: \$133/sq. ft.
 Clearwater: \$328/sq. ft.
 Clearwater: \$328/sq. ft.
 Pinellas: \$361/sq. ft.

Inventory for Sale

Imperial Court 9%
 Clearwater 6%
 Pinellas 5%

Avg. Time to Close Over Last 12 Months



Imperial Court
Clearwater
Pinellas

47 days
86 days
80 days