

Unit 6206 92nd PI N # 3606 - Lake Forest

6206 92nd PI N # 3606 - 6236-6464 93 Ter N, Pinellas Park, FL, Pinellas 33782

Unit Information

MLS Number: T3552719
 Status: Active
 Size: 1,245 Sq ft.
 Bedrooms: 2
 Full Bathrooms: 2
 Half Bathrooms: 0
 Parking Spaces:
 View:
 List Price: \$224,900
 List PPSF: \$181
 Valuated Price: \$219,000
 Valuated PPSF: \$176

The above valuated price is a baseline figure that does not take into account any specific renovation, upgrade, split, merge, or deterioration of the unit.

Building Information

Number of units: 295
 Number of active listings for rent: 0
 Number of active listings for sale: 18
 Building inventory for sale: 6%
 Number of sales over the last 12 months: 10
 Number of sales over the last 6 months: 2
 Number of sales over the last 3 months: 1

Building Association Information

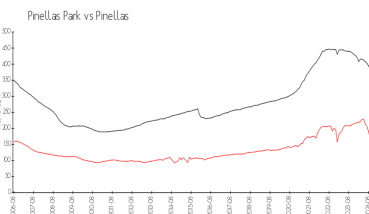
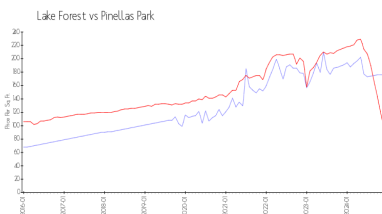
Lake Forest Condominium Association
 Address: 6350 93rd Terrace N,
 Pinellas Park, FL 33782
 Phone: +1 727-546-4764

<https://www.lakeforestcondoassn.com/>

Recent Sales

Unit #	Size	Closing Date	Sale Price	PPSF
4506	1,245 sq ft	Dec 2024	\$212,500	\$171
2902	1,245 sq ft	Oct 2024	\$219,000	\$176
4706	1,620 sq ft	Jul 2024	\$280,000	\$173
802	1,190 sq ft	Jun 2024	\$170,000	\$143
1905	1,245 sq ft	Jun 2024	\$235,000	\$189

Market Information

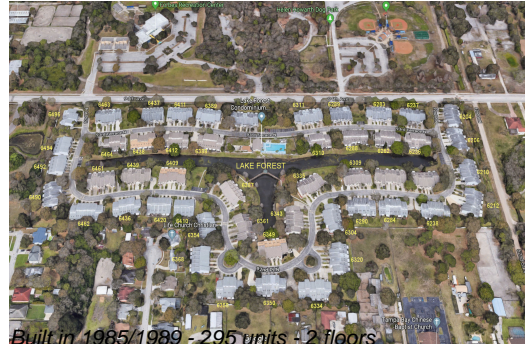


Lake Forest: \$176/sq. ft. Pinellas Park: \$95/sq. ft.
 Pinellas Park: \$95/sq. ft. Pinellas: \$311/sq. ft.

Inventory for Sale

Lake Forest: 6%
 Pinellas Park: 2%
 Pinellas: 4%

Avg. Time to Close Over Last 12 Months



Lake Forest
Pinellas Park
Pinellas

36 days
46 days
85 days