

# Unit 253 Ashley Ct - Highland Community Villas

253 Ashley Ct - 181-269 Ashley Ct, Dunedin, FL, Pinellas 34698

## Unit Information

MLS Number: TB8313770  
 Status: ACTIVE  
 Size: 1,712 Sq ft.  
 Bedrooms: 3  
 Full Bathrooms: 2  
 Half Bathrooms: 1  
 Parking Spaces: Driveway, Garage Door Opener, Guest, On Street  
 View: Trees/Woods  
 List Price: \$413,900  
 List PPSF: \$242  
 Valuated Price: \$393,000  
 Valuated PPSF: \$230

*The above valuated price is a baseline figure that does not take into account any specific renovation, upgrade, split, merge, or deterioration of the unit.*

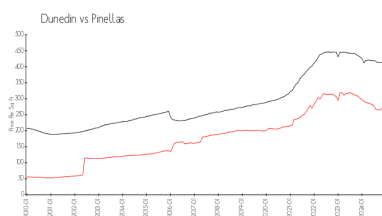
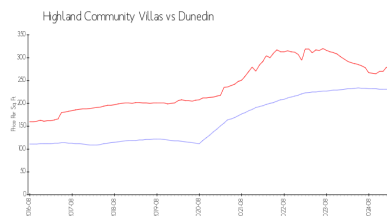
## Building Information

Number of units: 16  
 Number of active listings for rent: 0  
 Number of active listings for sale: 1  
 Building inventory for sale: 6%  
 Number of sales over the last 12 months: 1  
 Number of sales over the last 6 months: 0  
 Number of sales over the last 3 months: 0

## Recent Sales

Unit #	Size	Closing Date	Sale Price	PPSF
	1,712 sq ft	May 2024	\$400,000	\$234

## Market Information



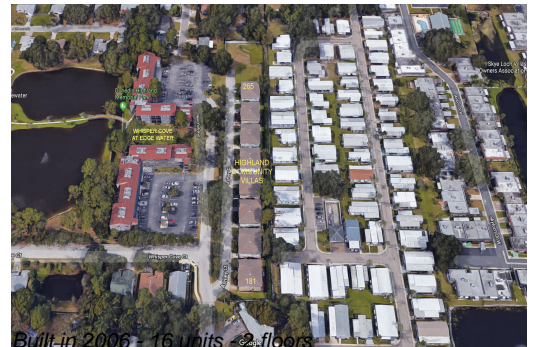
Highland Community Villas:	\$230/sq. ft.	Dunedin:	\$280/sq. ft.
Dunedin:	\$280/sq. ft.	Pinellas:	\$404/sq. ft.

## Inventory for Sale

Highland Community Villas	6%
Dunedin	6%
Pinellas	6%

## Avg. Time to Close Over Last 12 Months

Highland Community Villas	31 days
Dunedin	105 days
Pinellas	91 days



Built in 2006 - 16 units - 2 floors