

Unit 11590 Shipwatch Dr # 846 - Shipwatch

11590 Shipwatch Dr # 846 - 11500-11730 Shipwatch Dr, Largo, FL, Pinellas 33774

Unit Information

MLS Number: TB8316707
 Status: Active
 Size: 1,225 Sq ft.
 Bedrooms: 2
 Full Bathrooms: 2
 Half Bathrooms: 0
 Parking Spaces:
 View: Garden, Water
 List Price: \$5,000
 List PPSF: \$4
 Valuated Price: \$401,000
 Valuated PPSF: \$327

The above valuated price is a baseline figure that does not take into account any specific renovation, upgrade, split, merge, or deterioration of the unit.

Building Information

Number of units: 404
 Number of active listings for rent: 0
 Number of active listings for sale: 19
 Building inventory for sale: 4%
 Number of sales over the last 12 months: 17
 Number of sales over the last 6 months: 4
 Number of sales over the last 3 months: 3

Building Association Information

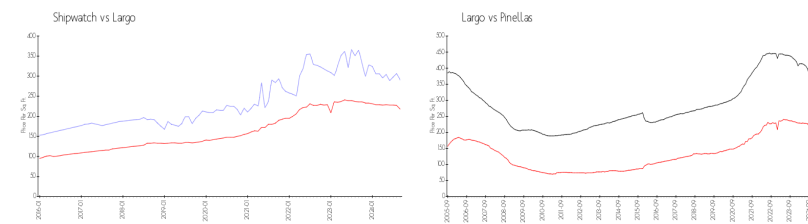
Shipwatch Homeowners Association
 11900 Shipwatch Dr
 Largo, FL 33774
 (727) 595-9300

<https://www.shipwatchyachtandtennisclub.com/>

Recent Sales

Unit #	Size	Closing Date	Sale Price	PPSF
1414	1,235 sq ft	Oct 2024	\$310,000	\$251
1742	1,235 sq ft	Sep 2024	\$285,000	\$231
1447	1,235 sq ft	Sep 2024	\$404,000	\$327
1013	1,385 sq ft	Jun 2024	\$480,000	\$347
807	1,225 sq ft	May 2024	\$460,000	\$376
1610	1,235 sq ft	May 2024	\$345,000	\$279
742	1,225 sq ft	May 2024	\$395,000	\$322

Market Information



Shipwatch: \$290/sq. ft.
 Largo: \$218/sq. ft.
 Largo: \$218/sq. ft.
 Pinellas: \$361/sq. ft.

Inventory for Sale

Shipwatch 5%
 Largo 4%
 Pinellas 5%



Avg. Time to Close Over Last 12 Months

Shipwatch	95 days
Largo	79 days
Pinellas	80 days