

Unit 3310 Haviland Ct # 203 - Bentley at Cobbs Landing

3310 Haviland Ct # 203 - 3260 Haviland Ct, Palm Harbor, FL, Pinellas 34684

Unit Information

MLS Number:	TB8317164
Status:	ACTIVE
Size:	1,121 Sq ft.
Bedrooms:	2
Full Bathrooms:	2
Half Bathrooms:	0
Parking Spaces:	
View:	
List Price:	\$209,000
List PPSF:	\$186
Valuated Price:	\$184,000
Valuated PPSF:	\$164

The above valuated price is a baseline figure that does not take into account any specific renovation, upgrade, split, merge, or deterioration of the unit.

Building Information

Number of units:	200
Number of active listings for rent:	0
Number of active listings for sale:	10
Building inventory for sale:	5%
Number of sales over the last 12 months:	5
Number of sales over the last 6 months:	2
Number of sales over the last 3 months:	0

Building Association Information

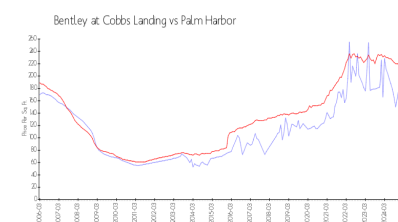
Bentley At Cobbs Landing
3320 Haviland Ct
Palm Harbor, FL 34684
(727) 789-1476

<http://www.thebentleyatcobbslanding.com/>

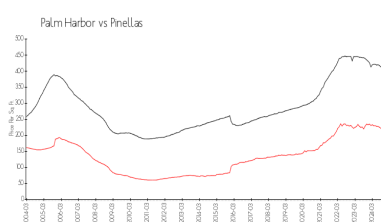
Recent Sales

Unit #	Size	Closing Date	Sale Price	PPSF
303	1,579 sq ft	Dec 2024	\$285,000	\$180
201	1,491 sq ft	Oct 2024	\$224,000	\$150
202	1,210 sq ft	May 2024	\$257,500	\$213
301	1,178 sq ft	Apr 2024	\$220,000	\$187
304	1,153 sq ft	Apr 2024	\$185,000	\$160

Market Information



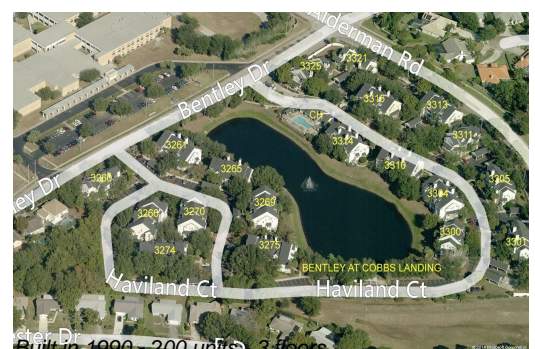
Bentley at Cobbs
Landing: \$164/sq. ft.
Palm Harbor: \$210/sq. ft.



Palm Harbor: \$210/sq. ft.
Pinellas: \$404/sq. ft.

Inventory for Sale

Bentley at Cobbs Landing	5%
Palm Harbor	4%



Pinellas	6%
----------	----

Avg. Time to Close Over Last 12 Months

Bentley at Cobbs Landing	56 days
Palm Harbor	82 days
Pinellas	91 days