

# Unit 2671 Sabal Springs Cir #102 - Misty Springs

2671 Sabal Springs Cir #102 - 2661-2689 Sabal Springs Cir, Clearwater, FL, Pinellas  
33755

## Unit Information

MLS Number: TB8321851  
Status: ACTIVE  
Size: 1,100 Sq ft.  
Bedrooms: 2  
Full Bathrooms: 2  
Half Bathrooms: 0  
Parking Spaces: Assigned, Covered, Guest, On Street, Open  
View: Trees/Woods, Water  
List Price: \$267,000  
List PPSF: \$243  
Valuated Price: \$212,000  
Valuated PPSF: \$193

*The above valuated price is a baseline figure that does not take into account any specific renovation, upgrade, split, merge, or deterioration of the unit.*

## Building Information

Number of units: 234  
Number of active listings for rent: 0  
Number of active listings for sale: 21  
Building inventory for sale: 8%  
Number of sales over the last 12 months: 3  
Number of sales over the last 6 months: 2  
Number of sales over the last 3 months: 2

## Building Association Information

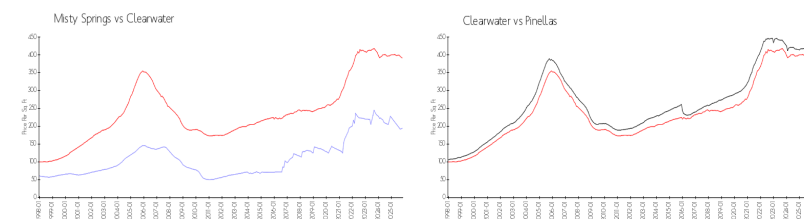
Misty Springs Condominium Association  
2661-2689 SABAL SPRINGS CIR,  
Clearwater, FL 33761  
PROGRESSIVE MANAGEMENT, INC.  
4151 WOODLANDS PKWY  
PALM HARBOR FL 34685  
PHONE 727-773-9542  
FAX 727-773-8740

<https://>

## Recent Sales

Unit #	Size	Closing Date	Sale Price	PPSF
101	1,395 sq ft	Sep 2025	\$275,000	\$197
204	1,075 sq ft	Sep 2025	\$200,000	\$186
206	805 sq ft	Feb 2025	\$184,000	\$229

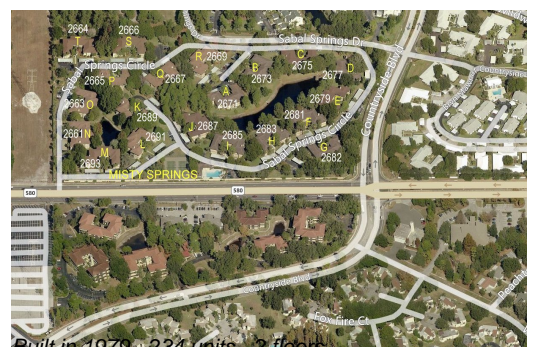
## Market Information



Misty Springs: \$194/sq. ft.  
Clearwater: \$391/sq. ft.

Clearwater: \$391/sq. ft.  
Pinellas: \$385/sq. ft.

## Inventory for Sale



Built in 1979 - 234 Units - 2 floors

Misty Springs	9%
Clearwater	8%
Pinellas	8%

**Avg. Time to Close Over Last 12 Months**

Misty Springs	41 days
Clearwater	105 days
Pinellas	100 days