

Unit 14880 Shipwatch Trce # 1915 - Shipwatch

14880 Shipwatch Trce # 1915 - 11500-11730 Shipwatch Dr, Largo, FL, Pinellas 33774

Unit Information

MLS Number: TB8321925
 Status: ACTIVE
 Size: 1,235 Sq ft.
 Bedrooms: 2
 Full Bathrooms: 2
 Half Bathrooms: 0
 Parking Spaces: Garage Door Opener, Guest, Parking Pad
 View:
 List Price: \$349,990
 List PPSF: \$283
 Valuated Price: \$145,000
 Valuated PPSF: \$117

The above valuated price is a baseline figure that does not take into account any specific renovation, upgrade, split, merge, or deterioration of the unit.

Building Information

Number of units: 404
 Number of active listings for rent: 0
 Number of active listings for sale: 14
 Building inventory for sale: 3%
 Number of sales over the last 12 months: 16
 Number of sales over the last 6 months: 7
 Number of sales over the last 3 months: 4

Building Association Information

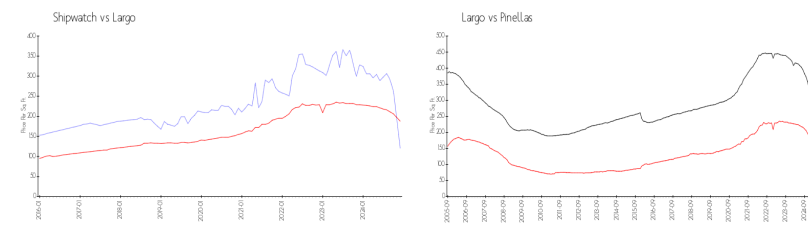
Shipwatch Homeowners Association
 11900 Shipwatch Dr
 Largo, FL 33774
 (727) 595-9300

<https://www.shipwatchyachtandtennisclub.com/>

Recent Sales

Unit #	Size	Closing Date	Sale Price	PPSF
1822	1,235 sq ft	Jan 2025	\$345,000	\$279
504	1,225 sq ft	Jan 2025	\$325,000	\$265
1917	1,340 sq ft	Jan 2025	\$357,500	\$267
703	1,225 sq ft	Dec 2024	\$375,000	\$306
1414	1,235 sq ft	Oct 2024	\$310,000	\$251

Market Information



Shipwatch: \$121/sq. ft. Largo: \$188/sq. ft.
 Largo: \$188/sq. ft. Pinellas: \$311/sq. ft.

Inventory for Sale

Shipwatch: 3%
 Largo: 3%
 Pinellas: 4%



Avg. Time to Close Over Last 12 Months

Shipwatch	71 days
Largo	81 days
Pinellas	85 days