

Unit 2679 Sabal Springs Cir #203 - Misty Springs

2679 Sabal Springs Cir #203 - 2661-2689 Sabal Springs Cir, Clearwater, FL, Pinellas 33755

Unit Information

MLS Number: TB8334602
Status: ACTIVE
Size: 1,075 Sq ft.
Bedrooms: 2
Full Bathrooms: 2
Half Bathrooms: 0
Parking Spaces: Assigned, Covered, Guest
View: Trees/Woods, Water
List Price: \$215,000
List PPSF: \$200
Valuated Price: \$210,000
Valuated PPSF: \$195

The above valuated price is a baseline figure that does not take into account any specific renovation, upgrade, split, merge, or deterioration of the unit.

Building Information

Number of units: 234
Number of active listings for rent: 0
Number of active listings for sale: 21
Building inventory for sale: 8%
Number of sales over the last 12 months: 3
Number of sales over the last 6 months: 2
Number of sales over the last 3 months: 2

Building Association Information

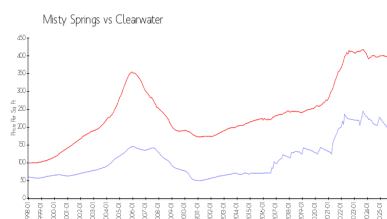
Misty Springs Condominium Association
2661-2689 SABAL SPRINGS CIR,
Clearwater, FL 33761
PROGRESSIVE MANAGEMENT, INC.
4151 WOODLANDS PKWY
PALM HARBOR FL 34685
PHONE 727-773-9542
FAX 727-773-8740

<https://>

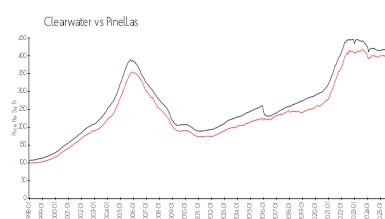
Recent Sales

Unit #	Size	Closing Date	Sale Price	PPSF
101	1,395 sq ft	Sep 2025	\$275,000	\$197
204	1,075 sq ft	Sep 2025	\$200,000	\$186
206	805 sq ft	Feb 2025	\$184,000	\$229

Market Information

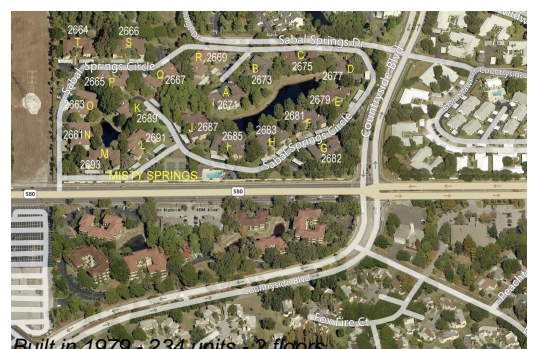


Misty Springs: \$194/sq. ft.
Clearwater: \$391/sq. ft.



Clearwater: \$391/sq. ft.
Pinellas: \$385/sq. ft.

Inventory for Sale



Misty Springs	9%
Clearwater	8%
Pinellas	8%

Avg. Time to Close Over Last 12 Months

Misty Springs	41 days
Clearwater	106 days
Pinellas	100 days