

Unit 1568 Nantucket Ct # 1302 - Harbourtowne at Country Woods

1568 Nantucket Ct # 1302 - 1533-1755 Nantucket Ct, Palm Harbor, FL, Pinellas
34683

Unit Information

MLS Number:	TB8338823
Status:	ACTIVE
Size:	675 Sq ft.
Bedrooms:	1
Full Bathrooms:	1
Half Bathrooms:	0
Parking Spaces:	Assigned, Guest
View:	
List Price:	\$155,693
List PPSF:	\$231
Valuated Price:	\$122,000
Valuated PPSF:	\$181

The above valuated price is a baseline figure that does not take into account any specific renovation, upgrade, split, merge, or deterioration of the unit.

Building Information

Number of units:	248
Number of active listings for rent:	0
Number of active listings for sale:	4
Building inventory for sale:	1%
Number of sales over the last 12 months:	1
Number of sales over the last 6 months:	0
Number of sales over the last 3 months:	0

Building Association Information

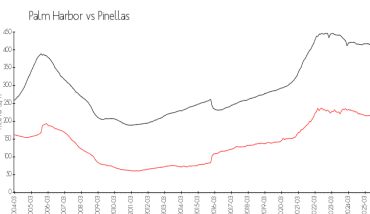
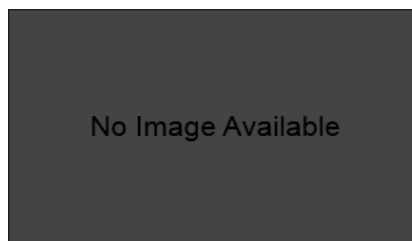
Harbourtowne at Country Woods
Condo Assoc Inc.
1697 Nantucket Ct
Palm Harbor FL 34683
717 701-0792

<https://htcondos.com/>

Recent Sales

Unit #	Size	Closing Date	Sale Price	PPSF
1208	925 sq ft	Jun 2025	\$155,000	\$168

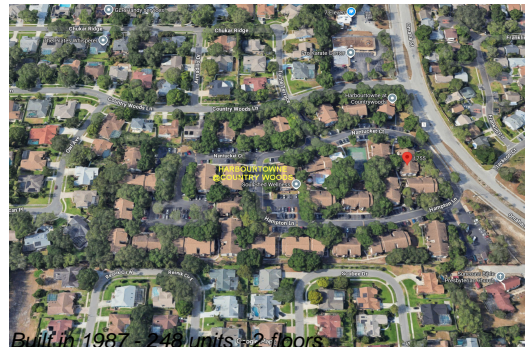
Market Information



Harbourtowne at Country Woods:	\$181/sq. ft.	Palm Harbor:	\$200/sq. ft.
Palm Harbor:	\$200/sq. ft.	Pinellas:	\$385/sq. ft.

Inventory for Sale

Harbourtowne at Country Woods	2%
Palm Harbor	5%
Pinellas	8%



Avg. Time to Close Over Last 12 Months

Harbourtowne at Country Woods	74 days
Palm Harbor	106 days
Pinellas	100 days