

# Unit 308 - Yacht & Tennis Club - Intrepid

308 - 9425 Blind Pass Rd, St Pete Beach, FL, Pinellas 33706

## Unit Information

MLS Number: TB8373966  
Status: ACTIVE  
Size: 1,430 Sq ft.  
Bedrooms: 2  
Full Bathrooms: 2  
Half Bathrooms: 0  
Parking Spaces: Guest, None, Open  
View: Water  
List Price: \$779,000  
List PPSF: \$545  
Valuated Price: \$589,000  
Valuated PPSF: \$412

*The above valuated price is a baseline figure that does not take into account any specific renovation, upgrade, split, merge, or deterioration of the unit.*

## Building Information

Number of units: 93  
Number of active listings for rent: 0  
Number of active listings for sale: 12  
Building inventory for sale: 12%  
Number of sales over the last 12 months: 5  
Number of sales over the last 6 months: 4  
Number of sales over the last 3 months: 0

## Building Association Information

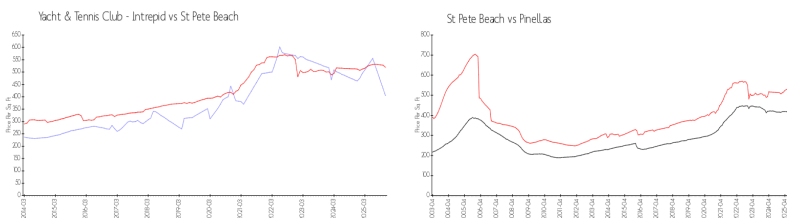
Yacht & Tennis Club Association Inc Address: 9415 Blind Pass Rd,  
St Pete Beach, FL 33706,  
Phone: +1 727-360-0379

<https://>

## Recent Sales

Unit #	Size	Closing Date	Sale Price	PPSF
1103	1,175 sq ft	Aug 2025	\$595,000	\$506
907	1,175 sq ft	Jul 2025	\$592,500	\$504
307	1,175 sq ft	Jun 2025	\$605,000	\$515

## Market Information



Yacht & Tennis Club \$403/sq. ft.  
- Intrepid:  
St Pete Beach: \$519/sq. ft.

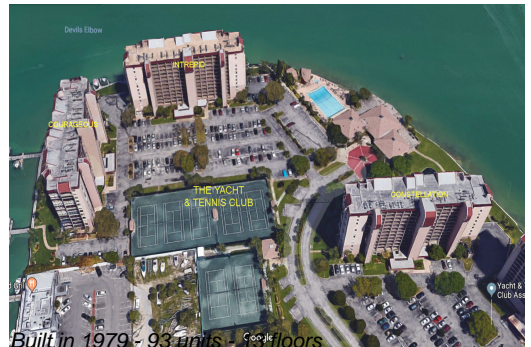
St Pete Beach: \$519/sq. ft.  
Pinellas: \$390/sq. ft.

## Inventory for Sale

Yacht & Tennis Club - Intrepid 13%  
St Pete Beach 6%  
Pinellas 7%

## Avg. Time to Close Over Last 12 Months

Yacht & Tennis Club - Intrepid 149 days



St Pete Beach  
Pinellas

96 days  
98 days