

Unit 11351 Shipwatch Ln # 1844 - Shipwatch

11351 Shipwatch Ln # 1844 - 11500-11730 Shipwatch Dr, Largo, FL, Pinellas 33774

Unit Information

MLS Number: TB8381668
Status: ACTIVE
Size: 1,340 Sq ft.
Bedrooms: 3
Full Bathrooms: 2
Half Bathrooms: 0
Parking Spaces:
View:
List Price: \$395,000
List PPSF: \$295
Valuated Price: \$312,000
Valuated PPSF: \$233

The above valuated price is a baseline figure that does not take into account any specific renovation, upgrade, split, merge, or deterioration of the unit.

Building Information

Number of units: 404
Number of active listings for rent: 0
Number of active listings for sale: 26
Building inventory for sale: 6%
Number of sales over the last 12 months: 19
Number of sales over the last 6 months: 7
Number of sales over the last 3 months: 3

Building Association Information

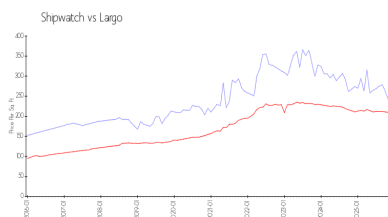
Shipwatch Homeowners Association
11900 Shipwatch Dr
Largo, FL 33774
(727) 595-9300

<https://www.shipwatchyachtandtennisclub.com/>

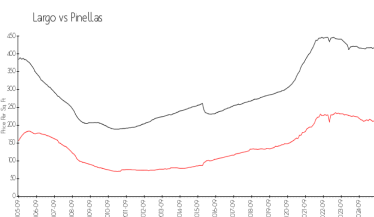
Recent Sales

Unit #	Size	Closing Date	Sale Price	PPSF
1621	1,235 sq ft	Nov 2025	\$290,000	\$235
1924	1,556 sq ft	Sep 2025	\$382,500	\$246
1375	1,235 sq ft	Sep 2025	\$307,250	\$249
5009	1,200 sq ft	Sep 2025	\$325,000	\$271
1386	1,235 sq ft	Jun 2025	\$265,000	\$215
548	1,445 sq ft	Jun 2025	\$455,000	\$315
342	1,225 sq ft	Jun 2025	\$345,000	\$282
1725	1,235 sq ft	Jun 2025	\$410,000	\$332
203	1,225 sq ft	Jun 2025	\$270,000	\$220

Market Information



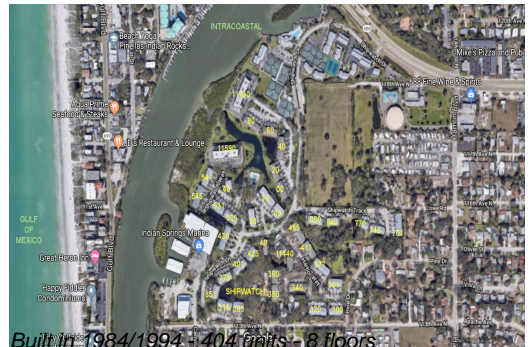
Shipwatch: \$242/sq. ft.
Largo: \$210/sq. ft.



Largo: \$210/sq. ft.
Pinellas: \$385/sq. ft.

Inventory for Sale

Shipwatch 6%



Largo	5%
Pinellas	7%

Avg. Time to Close Over Last 12 Months

Shipwatch	90 days
Largo	98 days
Pinellas	99 days