

# Unit 415 - Golfview I

415 - 6100 Gulfport Blvd S, Gulfport, FL, Pinellas 33707

## Unit Information

MLS Number:	TB8389952
Status:	ACTIVE
Size:	914 Sq ft.
Bedrooms:	2
Full Bathrooms:	1
Half Bathrooms:	0
Parking Spaces:	
View:	
List Price:	\$255,000
List PPSF:	\$279
Valuated Price:	\$245,000
Valuated PPSF:	\$268

*The above valuated price is a baseline figure that does not take into account any specific renovation, upgrade, split, merge, or deterioration of the unit.*

## Building Information

Number of units:	69
Number of active listings for rent:	0
Number of active listings for sale:	4
Building inventory for sale:	5%
Number of sales over the last 12 months:	3
Number of sales over the last 6 months:	0
Number of sales over the last 3 months:	0

## Building Association Information

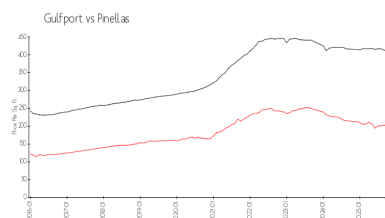
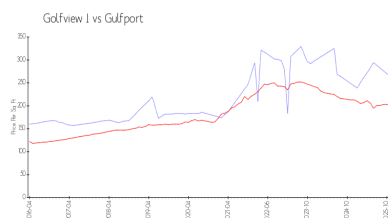
Golfview Condominiums  
6100 Gulfport Blvd S  
Gulfport, FL 33707  
(727) 343-2576

<https://>

## Recent Sales

Unit #	Size	Closing Date	Sale Price	PPSF
316	914 sq ft	Jun 2025	\$270,000	\$295
310	1,114 sq ft	May 2025	\$275,000	\$247
210	1,114 sq ft	Jan 2025	\$265,000	\$238

## Market Information



Golfview I: \$265/sq. ft.  
Gulfport: \$202/sq. ft.

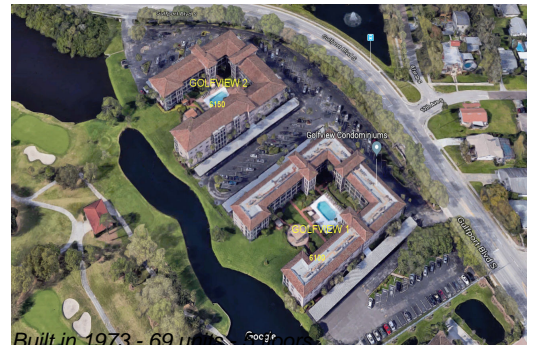
Gulfport: \$202/sq. ft.  
Pinellas: \$385/sq. ft.

## Inventory for Sale

Golfview I	6%
Gulfport	9%
Pinellas	8%

## Avg. Time to Close Over Last 12 Months

Golfview I	102 days
------------	----------



Gulfport  
Pinellas

102 days  
100 days