

Unit 2171 Portofino PI # 2725 - Tuscany at Innisbrook

2171 Portofino PI # 2725 - 2107-2284 Portofino PI, Palm Harbor, FL, Pinellas 34683

Unit Information

MLS Number:	TB8394889
Status:	ACTIVE
Size:	1,214 Sq ft.
Bedrooms:	2
Full Bathrooms:	2
Half Bathrooms:	0
Parking Spaces:	Assigned
View:	Garden, Trees/Woods
List Price:	\$290,000
List PPSF:	\$239
Valuated Price:	\$267,000
Valuated PPSF:	\$220

The above valuated price is a baseline figure that does not take into account any specific renovation, upgrade, split, merge, or deterioration of the unit.

Building Information

Number of units:	396
Number of active listings for rent:	0
Number of active listings for sale:	23
Building inventory for sale:	5%
Number of sales over the last 12 months:	5
Number of sales over the last 6 months:	2
Number of sales over the last 3 months:	0

Building Association Information

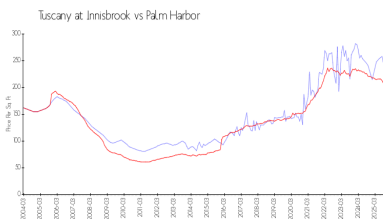
Tuscany at Innisbrook Condominiums
2230 Tuscany Trce
Palm Harbor, FL 34683
727-943-5697

<https://www.tuscanyatinnisbrook.org/>

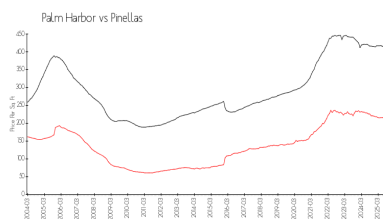
Recent Sales

Unit #	Size	Closing Date	Sale Price	PPSF
8	1,340 sq ft	Aug 2025	\$350,000	\$261
8-0812	750 sq ft	Jul 2025	\$193,000	\$257
21	1,460 sq ft	Apr 2025	\$347,500	\$238
718	1,075 sq ft	Apr 2025	\$292,500	\$272
2818	1,075 sq ft	Jan 2025	\$245,000	\$228

Market Information



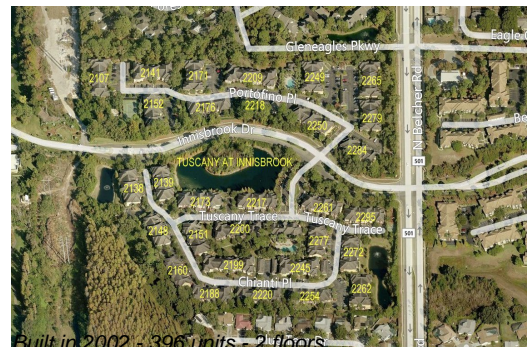
Tuscany at Innisbrook: \$218/sq. ft.
Palm Harbor: \$200/sq. ft.



Palm Harbor: \$200/sq. ft.
Pinellas: \$385/sq. ft.

Inventory for Sale

Tuscany at Innisbrook	6%
Palm Harbor	5%



Pinellas	8%
----------	----

Avg. Time to Close Over Last 12 Months

Tuscany at Innisbrook	164 days
Palm Harbor	106 days
Pinellas	100 days