

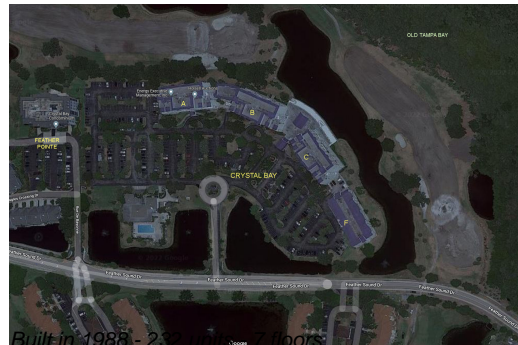
Unit C209 - Crystal Bay

C209 - 2332 Feather Sound Dr, Clearwater, FL, Pinellas 33762

Unit Information

MLS Number:	TB8405460
Status:	ACTIVE
Size:	740 Sq ft.
Bedrooms:	1
Full Bathrooms:	1
Half Bathrooms:	0
Parking Spaces:	None
View:	
Rental Price:	\$1,400
List PPSF:	\$2
Valuated Price:	\$158,000
Valuated PPSF:	\$211

The above valuated price is a baseline figure that does not take into account any specific renovation, upgrade, split, merge, or deterioration of the unit.



Building Information

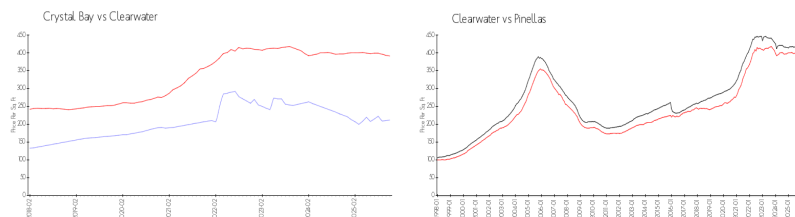
Number of units:	232
Number of active listings for rent:	0
Number of active listings for sale:	29
Building inventory for sale:	12%
Number of sales over the last 12 months:	11
Number of sales over the last 6 months:	5
Number of sales over the last 3 months:	2

Building Association Information

Crystal Bay Condominium
Address: 2333 Feather Sound Dr, Clearwater, FL 33762
Phone: +1 727-572-4353

<https://www.crystalbaycondo.com/>

Market Information



Crystal Bay:	\$212/sq. ft.	Clearwater:	\$391/sq. ft.
Clearwater:	\$391/sq. ft.	Pinellas:	\$385/sq. ft.

Inventory for Sale

Crystal Bay	13%
Clearwater	8%
Pinellas	8%

Avg. Time to Close Over Last 12 Months

Crystal Bay	104 days
Clearwater	105 days
Pinellas	100 days