

Unit 2721 Countryside Blvd # 105 - Bryn Mawr at Countryside

2721 Countryside Blvd # 105 - 2701-2765 Countryside Blvd, Clearwater, FL, Pinellas 33761

Unit Information

MLS Number:	TB8429044
Status:	ACTIVE
Size:	1,100 Sq ft.
Bedrooms:	2
Full Bathrooms:	2
Half Bathrooms:	0
Parking Spaces:	Covered, Guest
View:	
List Price:	\$255,500
List PPSF:	\$232
Valuated Price:	\$182,000
Valuated PPSF:	\$165

The above valuated price is a baseline figure that does not take into account any specific renovation, upgrade, split, merge, or deterioration of the unit.

Building Information

Number of units:	112
Number of active listings for rent:	0
Number of active listings for sale:	11
Building inventory for sale:	9%
Number of sales over the last 12 months:	2
Number of sales over the last 6 months:	1
Number of sales over the last 3 months:	0

Building Association Information

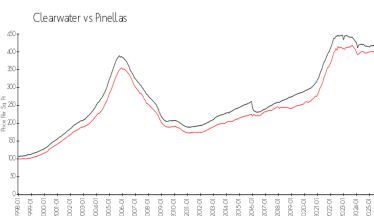
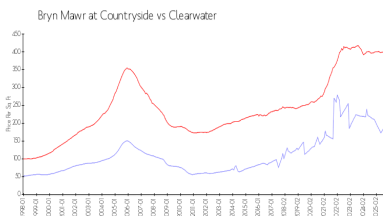
BRYN MAWR AT COUNTRYSIDE CONDOMINIUM ASSOCIATION, INC.
 PROGRESSIVE MANAGEMENT, INC.
 4151 WOODLANDS PKWY
 PALM HARBOR FL 34685
 727-773-9542

<https://>

Recent Sales

Unit #	Size	Closing Date	Sale Price	PPSF
107	830 sq ft	Jun 2025	\$150,000	\$181
102	1,005 sq ft	Dec 2024	\$220,000	\$219

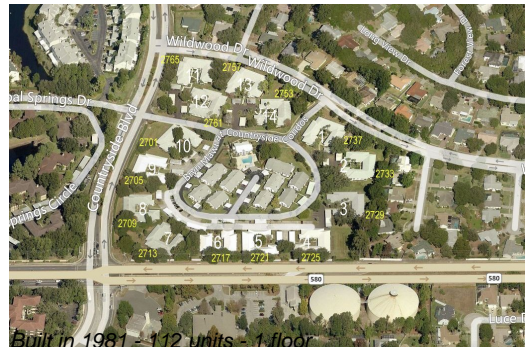
Market Information



Bryn Mawr at Countryside:	\$198/sq. ft.	Clearwater:	\$391/sq. ft.
Clearwater:	\$391/sq. ft.	Pinellas:	\$385/sq. ft.

Inventory for Sale

Bryn Mawr at Countryside	10%
Clearwater	8%
Pinellas	8%



Avg. Time to Close Over Last 12 Months

Bryn Mawr at Countryside	11 days
Clearwater	105 days
Pinellas	100 days