

Unit 6409 92nd PI N # 1103 - Lake Forest

6409 92nd PI N # 1103 - 6236-6464 93 Ter N, Pinellas Park, FL, Pinellas 33782

Unit Information

MLS Number: TB8430640
Status: ACTIVE
Size: 1,620 Sq ft.
Bedrooms: 3
Full Bathrooms: 2
Half Bathrooms: 0
Parking Spaces: Driveway, Garage Door Opener, Ground Level, Guest, Split Garage
View: Water
List Price: \$299,500
List PPSF: \$185
Valuated Price: \$258,000
Valuated PPSF: \$159

The above valuated price is a baseline figure that does not take into account any specific renovation, upgrade, split, merge, or deterioration of the unit.

Building Information

Number of units: 295
Number of active listings for rent: 0
Number of active listings for sale: 29
Building inventory for sale: 9%
Number of sales over the last 12 months: 6
Number of sales over the last 6 months: 4
Number of sales over the last 3 months: 3

Building Association Information

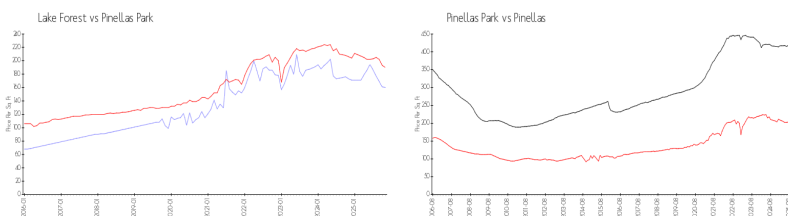
Lake Forest Condominium Association
Address: 6350 93rd Terrace N,
Pinellas Park, FL 33782
Phone: +1 727-546-4764

<https://www.lakeforestcondoassn.com/>

Recent Sales

Unit #	Size	Closing Date	Sale Price	PPSF
3502	1,245 sq ft	Dec 2025	\$220,000	\$177
2103	1,190 sq ft	Nov 2025	\$220,000	\$185
3905	1,245 sq ft	Oct 2025	\$200,000	\$161
2102	1,245 sq ft	Jun 2025	\$225,000	\$181
802	1,190 sq ft	Jun 2025	\$247,000	\$208

Market Information

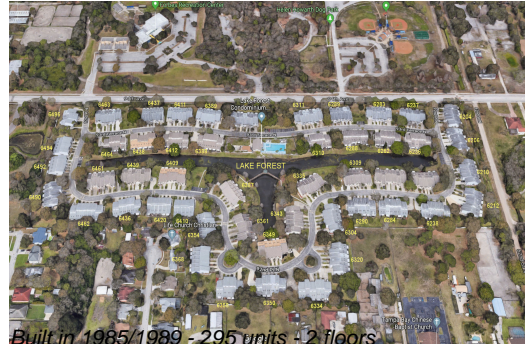


Lake Forest: \$160/sq. ft.
Pinellas Park: \$190/sq. ft.

Pinellas Park: \$190/sq. ft.
Pinellas: \$385/sq. ft.

Inventory for Sale

Lake Forest 10%
Pinellas Park 5%
Pinellas 8%



Avg. Time to Close Over Last 12 Months

Lake Forest	56 days
Pinellas Park	57 days
Pinellas	100 days