

Unit 1230 S Missouri Ave # 711 - Avalon at Clearwater (1222 to 1240)

1230 S Missouri Ave # 711 - 1222 S Missouri Ave, Clearwater, FL, Pinellas 33756

Unit Information

MLS Number:	TB8430853
Status:	ACTIVE
Size:	701 Sq ft.
Bedrooms:	1
Full Bathrooms:	1
Half Bathrooms:	0
Parking Spaces:	
View:	
List Price:	\$204,900
List PPSF:	\$292
Valuated Price:	\$205,000
Valuated PPSF:	\$292

The above valuated price is a baseline figure that does not take into account any specific renovation, upgrade, split, merge, or deterioration of the unit.

Building Information

Number of units:	200
Number of active listings for rent:	0
Number of active listings for sale:	7
Building inventory for sale:	3%
Number of sales over the last 12 months:	10
Number of sales over the last 6 months:	7
Number of sales over the last 3 months:	4

Building Association Information

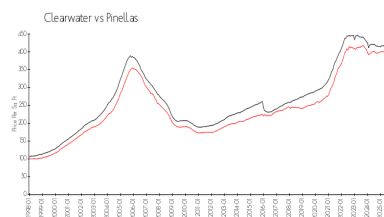
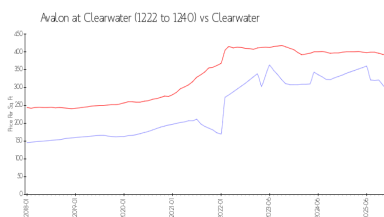
Avalon At Clearwater
Address: 1220 S Missouri Ave,
Clearwater, FL 33756

<https://>

Recent Sales

Unit #	Size	Closing Date	Sale Price	PPSF
108	1,096 sq ft	Dec 2025	\$282,228	\$258
1008	1,097 sq ft	Nov 2025	\$280,000	\$255
517	730 sq ft	Oct 2025	\$210,000	\$288
1013	1,097 sq ft	Sep 2025	\$315,000	\$287
707	730 sq ft	Sep 2025	\$210,000	\$288
415	485 sq ft	Sep 2025	\$186,000	\$384

Market Information

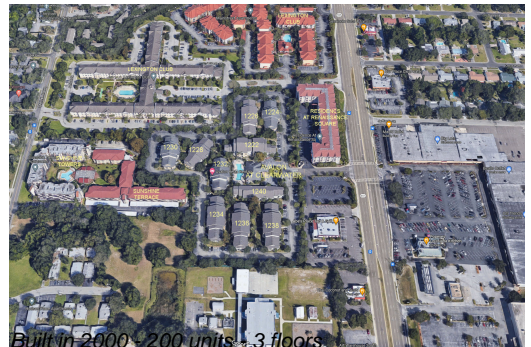


Avalon at Clearwater \$294/sq. ft.
(1222 to 1240):
Clearwater: \$391/sq. ft.

Clearwater: \$391/sq. ft.
Pinellas: \$385/sq. ft.

Inventory for Sale

Avalon at Clearwater (1222 to 1240)	4%
Clearwater	8%



Pinellas	8%
----------	----

Avg. Time to Close Over Last 12 Months

Avalon at Clearwater (1222 to 1240)	85 days
Clearwater	106 days
Pinellas	100 days